



ELECTRONIC COPY

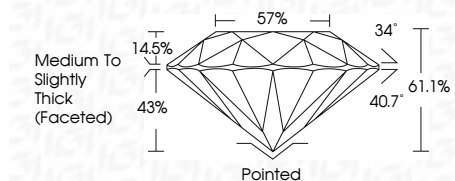
LG632438562 Report verification at igi.org



June 10, 2024 IGI Report Number LG632438562 Description LABORATORY GROWN DIAMOND Shape and Cutting Style ROUND BRILLIANT Measurements 8.30 - 8.36 X 5.09 MM

GRADING RESULTS

Carat Weight 2.17 CARATS Color Grade F Clarity Grade VVS 2 Cut Grade IDEAL



ADDITIONAL GRADING INFORMATION

Polish EXCELLENT Symmetry EXCELLENT Fluorescence NONE Inscription(s) IGI LG632438562 Comments: This Laboratory Grown Diamond was created by Chemical Vapor Deposition (CVD) growth process. Type IIa



June 10, 2024 IGI Report No. LG632438562 ROUND BRILLIANT 8.30 - 8.36 X 5.09 MM 2.17 CARATS F VVS 2 IDEAL 61.1% 57% Medium To Slightly Thick (Faceted) Pointed EXCELLENT EXCELLENT NONE IGI LG632438562

June 10, 2024 IGI Report Number LG632438562 Description LABORATORY GROWN DIAMOND Shape and Cutting Style ROUND BRILLIANT Measurements 8.30 - 8.36 X 5.09 MM

GRADING RESULTS

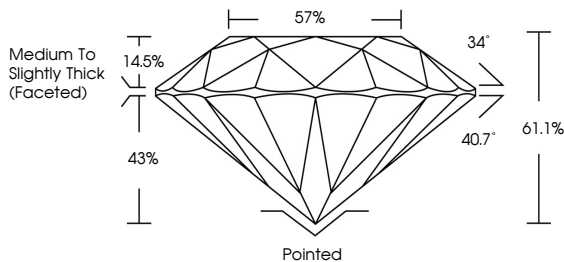
Carat Weight 2.17 CARATS Color Grade F Clarity Grade VVS 2 Cut Grade IDEAL

ADDITIONAL GRADING INFORMATION

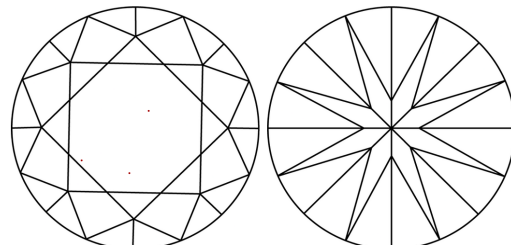
Polish EXCELLENT Symmetry EXCELLENT Fluorescence NONE Inscription(s) IGI LG632438562

Comments: This Laboratory Grown Diamond was created by Chemical Vapor Deposition (CVD) growth process. Type IIa

PROPORTIONS

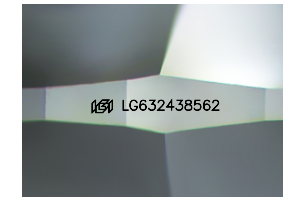


CLARITY CHARACTERISTICS



KEY TO SYMBOLS

Red symbols indicate internal characteristics. Green symbols indicate external characteristics.



Sample Image Used

COLOR

Table with columns D, E, F, G, H, I, J and color descriptions: Faint, Very Light, Light

CLARITY

Table with columns IF, VS 1-2, VS 1-2, SI 1-2, I 1-3 and descriptions: Internally Flawless, Very Very Slightly Included, Very Slightly Included, Slightly Included, Included



June 10, 2024 IGI Report No. LG632438562 ROUND BRILLIANT 8.30 - 8.36 X 5.09 MM 2.17 CARATS F VVS 2 IDEAL 61.1% 57% Medium To Slightly Thick (Faceted) Pointed EXCELLENT EXCELLENT NONE IGI LG632438562

Comments: This Laboratory Grown Diamond was created by Chemical Vapor Deposition (CVD) growth process. Type IIa