



ELECTRONIC COPY

LG638429613
Report verification at igi.org



June 17, 2024

IGI Report Number **LG638429613**

Description **LABORATORY GROWN DIAMOND**

Shape and Cutting Style **EMERALD CUT**

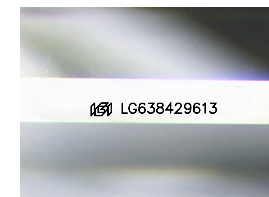
Measurements **6.84 X 4.88 X 3.08 MM**

GRADING RESULTS

Carat Weight **1.03 CARAT**

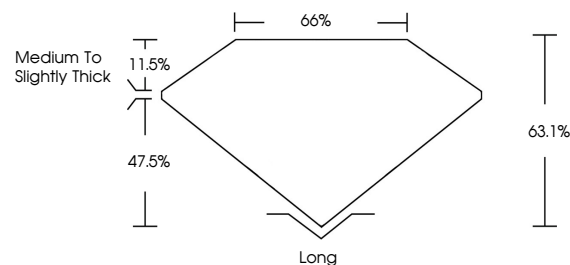
Color Grade **D**

Clarity Grade **VS 1**

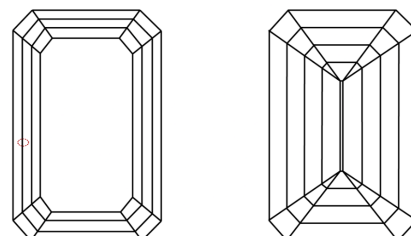


Sample Image Used

PROPORTIONS



CLARITY CHARACTERISTICS



KEY TO SYMBOLS

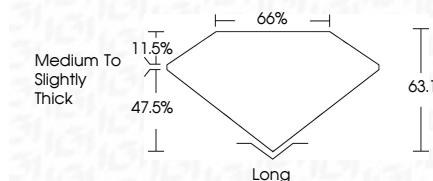
Red symbols indicate internal characteristics.
Green symbols indicate external characteristics.

COLOR

D E F G H I J Faint Very Light Light

CLARITY

IF	VS ¹⁻²	VS ¹⁻²	SI ¹⁻²	I ¹⁻³
Internally Flawless	Very Very Slightly Included	Very Slightly Included	Slightly Included	Included



ADDITIONAL GRADING INFORMATION

Polish **EXCELLENT**

Symmetry **EXCELLENT**

Fluorescence **NONE**

Inscription(s) **IGI LG638429613**

Comments: This Laboratory Grown Diamond was created by Chemical Vapor Deposition (CVD) growth process.
Type IIa



IGI



June 17, 2024
IGI Report No. LG638429613
EMERALD CUT
6.84 X 4.88 X 3.08 MM
Carat Weight
Color Grade
Clarity Grade
Depth
Table
Girdle
Medium to Slightly Thick
Culet
Polish
Symmetry
Fluorescence
Inscription(s)
1.03 CARAT
D
VS 1
63.1%
66%
EXCELLENT
EXCELLENT
NONE
IGI LG638429613

Comments: This Laboratory Grown Diamond was created by Chemical Vapor Deposition (CVD) growth process.
Type IIa