



ELECTRONIC COPY

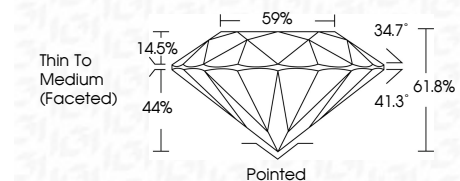
LG647477308 Report verification at igi.org



August 15, 2024 IGI Report Number LG647477308 Description LABORATORY GROWN DIAMOND Shape and Cutting Style ROUND BRILLIANT Measurements 9.27 - 9.31 X 5.75 MM

GRADING RESULTS

Carat Weight 3.05 CARATS Color Grade G Clarity Grade VS 1 Cut Grade IDEAL



ADDITIONAL GRADING INFORMATION

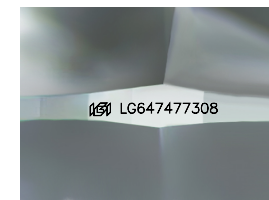
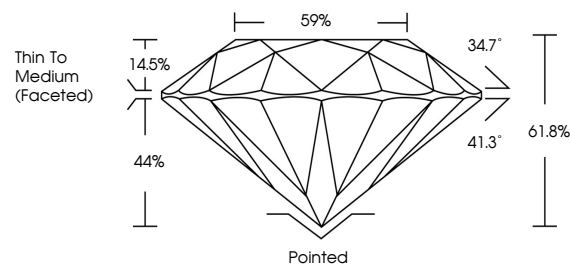
Polish EXCELLENT Symmetry EXCELLENT Fluorescence NONE Inscription(s) IGI LG647477308 Comments: This Laboratory Grown Diamond was created by Chemical Vapor Deposition (CVD) growth process. Type IIa



Table with 2 columns: Property and Value. Includes Carat Weight (3.05 CARATS), Color Grade (G), Clarity Grade (VS 1), Cut Grade (IDEAL), Depth (61.8%), Table (59%), Girdle (Thin To Medium (Faceted)), Polish (EXCELLENT), Symmetry (EXCELLENT), Fluorescence (NONE), and Inscription(s) (IGI LG647477308).

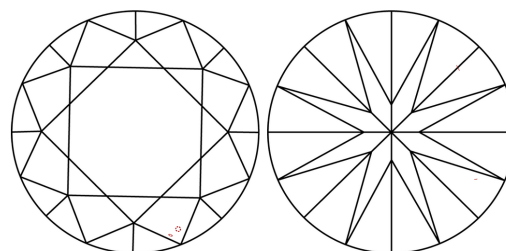
August 15, 2024 IGI Report No LG647477308 ROUND BRILLIANT

PROPORTIONS



Sample Image Used

CLARITY CHARACTERISTICS



KEY TO SYMBOLS

Red symbols indicate internal characteristics. Green symbols indicate external characteristics.

COLOR

D E F G H I J Faint Very Light Light

CLARITY

IF WS 1-2 VS 1-2 SI 1-2 I 1-3

Internally Flawless Very Very Slightly Included Very Slightly Included Slightly Included Included



Comments: This Laboratory Grown Diamond was created by Chemical Vapor Deposition (CVD) growth process. Type IIa