



**ELECTRONIC COPY**

LG680550931  
Report verification at igi.org



January 31, 2025

IGI Report Number **LG680550931**

Description **LABORATORY GROWN DIAMOND**

Shape and Cutting Style **ROUND BRILLIANT**

Measurements **8.32 - 8.38 X 5.17 MM**

**GRADING RESULTS**

Carat Weight **2.22 CARATS**

Color Grade **E**

Clarity Grade **VVS 2**

Cut Grade **IDEAL**

January 31, 2025

IGI Report Number **LG680550931**

Description **LABORATORY GROWN DIAMOND**

Shape and Cutting Style **ROUND BRILLIANT**

Measurements **8.32 - 8.38 X 5.17 MM**

**GRADING RESULTS**

Carat Weight **2.22 CARATS**

Color Grade **E**

Clarity Grade **VVS 2**

Cut Grade **IDEAL**

**ADDITIONAL GRADING INFORMATION**

Polish **EXCELLENT**

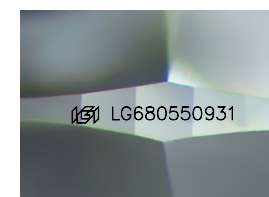
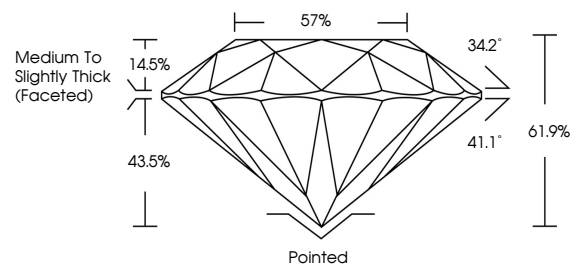
Symmetry **EXCELLENT**

Fluorescence **NONE**

Inscription(s) **LG680550931**

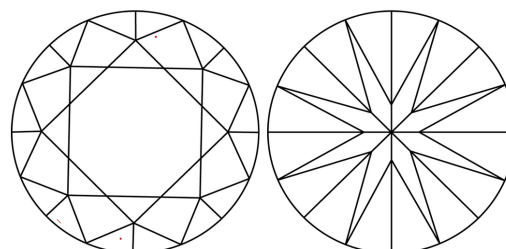
Comments: This Laboratory Grown Diamond was created by Chemical Vapor Deposition (CVD) growth process. Type IIa

**PROPORTIONS**



Sample Image Used

**CLARITY CHARACTERISTICS**



**KEY TO SYMBOLS**

Red symbols indicate internal characteristics.  
Green symbols indicate external characteristics.

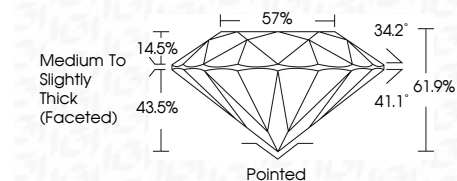
**COLOR**

D E F G H I J Faint Very Light Light

**CLARITY**

IF WS<sup>1-2</sup> VS<sup>1-2</sup> SI<sup>1-2</sup> I<sup>1-3</sup>

Internally Flawless Very Very Slightly Included Very Slightly Included Slightly Included Included



**ADDITIONAL GRADING INFORMATION**

Polish **EXCELLENT**

Symmetry **EXCELLENT**

Fluorescence **NONE**

Inscription(s) **LG680550931**

Comments: This Laboratory Grown Diamond was created by Chemical Vapor Deposition (CVD) growth process. Type IIa



**IGI**



January 31, 2025	IGI Report No LG680550931	2.22 CARATS	E	Pointed	EXCELLENT	EXCELLENT	NONE	LG680550931
8.32 - 8.38 X 5.17 MM	ROUND BRILLIANT	Carat Weight	VVS 2	Depth	IDEAL	61.9%	57%	Medium To Slightly Thick (Faceted)
		Color Grade	IDEAL	Girdle	61.9%			
		Clarity Grade	VVS 2	Culet	None			
		Cut Grade	IDEAL	Polish	EXCELLENT			
		Fluorescence	NONE	Symmetry	EXCELLENT			
		Inscription(s)	LG680550931	Comments:	This Laboratory Grown Diamond was created by Chemical Vapor Deposition (CVD) growth process. Type IIa			