



**ELECTRONIC COPY**

LG680559274  
Report verification at [igi.org](http://igi.org)



February 7, 2025

IGI Report Number **LG680559274**

Description **LABORATORY GROWN DIAMOND**

Shape and Cutting Style **ROUND BRILLIANT**

Measurements **7.67 - 7.74 X 4.70 MM**

**GRADING RESULTS**

Carat Weight **1.72 CARAT**

Color Grade **D**

Clarity Grade **VVS 2**

Cut Grade **IDEAL**

February 7, 2025

IGI Report Number **LG680559274**

Description **LABORATORY GROWN DIAMOND**

Shape and Cutting Style **ROUND BRILLIANT**

Measurements **7.67 - 7.74 X 4.70 MM**

**GRADING RESULTS**

Carat Weight **1.72 CARAT**

Color Grade **D**

Clarity Grade **VVS 2**

Cut Grade **IDEAL**

**ADDITIONAL GRADING INFORMATION**

Polish **EXCELLENT**

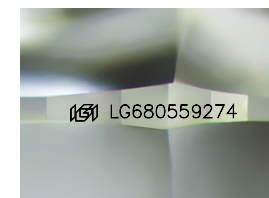
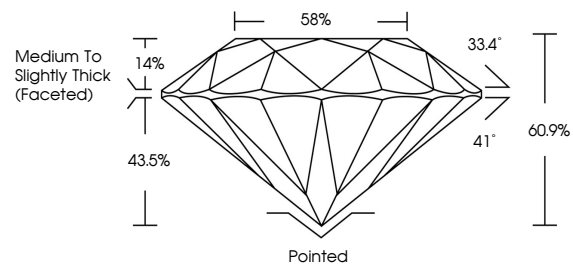
Symmetry **EXCELLENT**

Fluorescence **NONE**

Inscription(s) **IGI LG680559274**

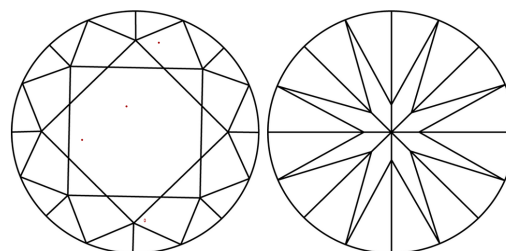
Comments: This Laboratory Grown Diamond was created by Chemical Vapor Deposition (CVD) growth process.  
Type IIa

**PROPORTIONS**



Sample Image Used

**CLARITY CHARACTERISTICS**



**KEY TO SYMBOLS**

Red symbols indicate internal characteristics.  
Green symbols indicate external characteristics.

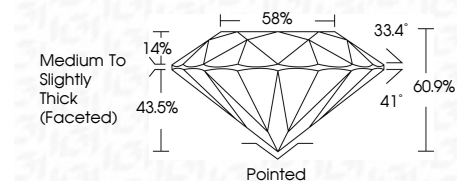
**COLOR**

D E F G H I J Faint Very Light Light

**CLARITY**

IF WS<sup>1-2</sup> VS<sup>1-2</sup> SI<sup>1-2</sup> I<sup>1-3</sup>

Internally Flawless Very Very Slightly Included Very Slightly Included Slightly Included Included



**ADDITIONAL GRADING INFORMATION**

Polish **EXCELLENT**

Symmetry **EXCELLENT**

Fluorescence **NONE**

Inscription(s) **IGI LG680559274**

Comments: This Laboratory Grown Diamond was created by Chemical Vapor Deposition (CVD) growth process.  
Type IIa



**IGI**



|                  |                           |                 |                       |            |       |        |        |          |              |                                    |  |           |           |      |                 |
|------------------|---------------------------|-----------------|-----------------------|------------|-------|--------|--------|----------|--------------|------------------------------------|--|-----------|-----------|------|-----------------|
| February 7, 2025 | IGI Report No LG680559274 | ROUND BRILLIANT | 7.67 - 7.74 X 4.70 MM | 1.72 CARAT | D     | VVS 2  | IDEAL  | 60.9%    | 58%          | Medium To Slightly Thick (Faceted) | Pointed  | EXCELLENT | EXCELLENT | NONE | IGI LG680559274 |
| Carat Weight     | Color Grade               | Clarity Grade   | Cut Grade             | Depth      | Table | Girdle | Polish | Symmetry | Fluorescence | Inscription(s)                     | Comments: This Laboratory Grown Diamond was created by Chemical Vapor Deposition (CVD) growth process.<br>Type IIa |           |           |      |                 |