



ELECTRONIC COPY

LG681588670
Report verification at igi.org



February 11, 2025

IGI Report Number **LG681588670**

Description **LABORATORY GROWN DIAMOND**

Shape and Cutting Style **ROUND BRILLIANT**

Measurements **10.16 - 10.23 X 6.29 MM**

GRADING RESULTS

Carat Weight **4.01 CARATS**

Color Grade **F**

Clarity Grade **VS 1**

Cut Grade **IDEAL**

February 11, 2025
IGI Report Number **LG681588670**
Description **LABORATORY GROWN DIAMOND**
Shape and Cutting Style **ROUND BRILLIANT**
Measurements **10.16 - 10.23 X 6.29 MM**

GRADING RESULTS

Carat Weight **4.01 CARATS**

Color Grade **F**

Clarity Grade **VS 1**

Cut Grade **IDEAL**

ADDITIONAL GRADING INFORMATION

Polish **VERY GOOD**

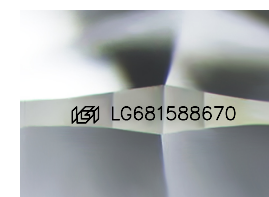
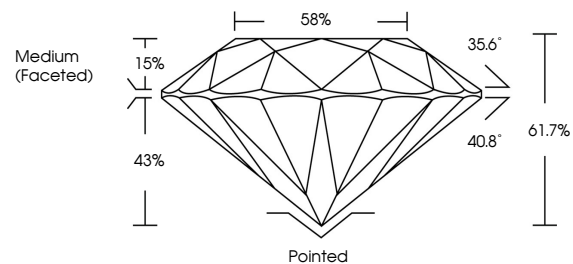
Symmetry **EXCELLENT**

Fluorescence **NONE**

Inscription(s) **LG681588670**

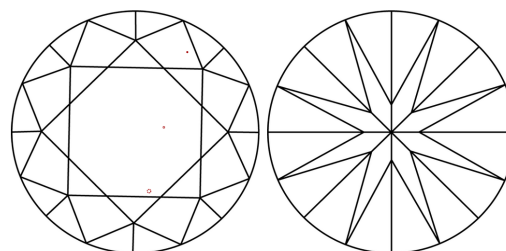
Comments: This Laboratory Grown Diamond was created by Chemical Vapor Deposition (CVD) growth process.
Type IIa

PROPORTIONS



Sample Image Used

CLARITY CHARACTERISTICS



KEY TO SYMBOLS

Red symbols indicate internal characteristics.
Green symbols indicate external characteristics.

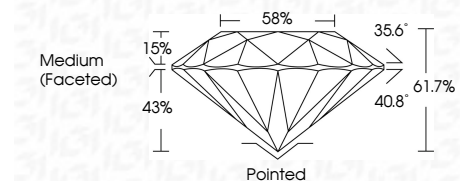
COLOR

D E F G H I J Faint Very Light Light

CLARITY

IF WS¹⁻² VS¹⁻² SI¹⁻² I¹⁻³

Internally Flawless Very Very Slightly Included Very Slightly Included Slightly Included Included



ADDITIONAL GRADING INFORMATION

Polish **VERY GOOD**

Symmetry **EXCELLENT**

Fluorescence **NONE**

Inscription(s) **LG681588670**

Comments: This Laboratory Grown Diamond was created by Chemical Vapor Deposition (CVD) growth process.
Type IIa



IGI



February 11, 2025
IGI Report No LG681588670
ROUND BRILLIANT

4.01 CARATS
F

10.16 - 10.23 X 6.29 MM

Carat Weight
Color Grade
Clarity Grade
Depth
Table
Girdle

4.01 CARATS
F
VS 1
IDEAL
61.7%
58%
Medium (Faceted)

Pointed
VERY GOOD
EXCELLENT
NONE
NONE
IGI LG681588670

Culet
Polish
Symmetry
Fluorescence
Inscription(s)

Comments: This Laboratory Grown Diamond was created by Chemical Vapor Deposition (CVD) growth process.
Type IIa