



ELECTRONIC COPY

LABORATORY GROWN DIAMOND REPORT

October 3, 2025	
IGI Report Number	LG735512553
Description	LABORATORY GROWN DIAMOND
Shape and Cutting Style	ROUND BRILLIANT
Measurements	9.23 - 9.26 X 5.52 MM

GRADING RESULTS

Carat Weight	2.88 CARATS
Color Grade	E
Clarity Grade	VS 1
Cut Grade	IDEAL

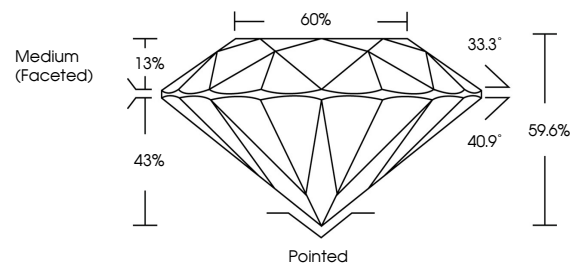
ADDITIONAL GRADING INFORMATION

Polish	EXCELLENT
Symmetry	EXCELLENT
Fluorescence	NONE
Inscription(s)	 LG735512553

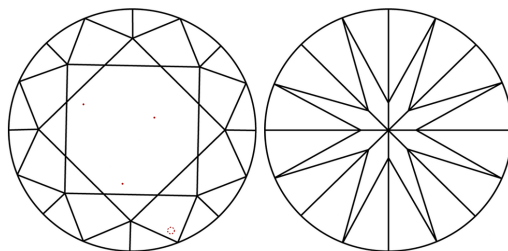
Comments: This Laboratory Grown Diamond was created by Chemical Vapor Deposition (CVD) growth process.
Type IIa

LG735512553
Report verification at igi.org

PROPORTIONS

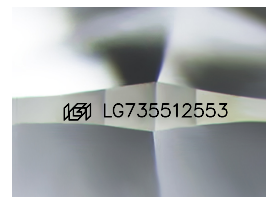


CLARITY CHARACTERISTICS



KEY TO SYMBOLS

Red symbols indicate internal characteristics.
Green symbols indicate external characteristics.



Sample Image Used

COLOR

D E F G H I J Faint Very Light Light

CLARITY

FL	IF	VVS ¹⁻²	VS ¹⁻²	SI ¹⁻²	I ¹⁻³
Flawless	Internally Flawless	Very Very Slightly Included	Very Slightly Included	Slightly Included	Included

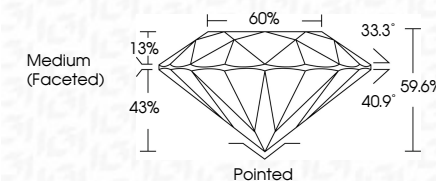
LABORATORY GROWN DIAMOND REPORT



October 3, 2025	
IGI Report Number	LG735512553
Description	LABORATORY GROWN DIAMOND
Shape and Cutting Style	ROUND BRILLIANT
Measurements	9.23 - 9.26 X 5.52 MM

GRADING RESULTS

Carat Weight	2.88 CARATS
Color Grade	E
Clarity Grade	VS 1
Cut Grade	IDEAL



ADDITIONAL GRADING INFORMATION

Polish	EXCELLENT
Symmetry	EXCELLENT
Fluorescence	NONE
Inscription(s)	 LG735512553
<p>Comments: This Laboratory Grown Diamond was created by Chemical Vapor Deposition (CVD) growth process.</p> <p>Type IIa</p>	



© IGI 2020, International Gemological Institute

FD - 10 20



THIS DOCUMENT WAS PRODUCED WITH THE FOLLOWING SECURITY MEASURES: SPECIAL DOCUMENT PAPER, INK SCREENS, WATERMARK, BACKGROUND DESIGNS, HOLOGRAM AND OTHER SECURITY FEATURES NOT LISTED AND DO EXCEED DOCUMENT SECURITY INDUSTRY GUIDELINES

www.igi.org

Date:	October 3, 2026
ID Report No:	LGI785512563
Stone Description:	ROUND BRILLIANT
Weight:	2.23 - 2.26 X 5.92 MM
Color Grade:	E
Clarity Grade:	VS 1
Cut Grade:	IDEAL
Depth:	69.6%
Table:	60%
Girdle:	Medium (Faceted)
Culet:	Poited
Polish:	EXCELLENT
Symmetry:	EXCELLENT
Fluorescence:	NONE
Inscriptions(s):	1691 LG1785512563

Comments:
 Created by Gemmy Group Diamond was
 treated by Chemical Vapor Deposition
 (CVD) growth process.
 Type IIa