



October 10, 2025
IGI Report Number LG741528163
HEART BRILLIANT
LABORATORY GROWN DIAMOND
5.62 X 6.59 X 4.05 MM
 Carat Weight **0.92 CARAT**
 Color Grade **F**
 Clarity Grade **VVS 2**
 Polish **EXCELLENT**
 Symmetry **EXCELLENT**
 Fluorescence **NONE**
 Inscription(s) **IGI LG741528163**

LABORATORY GROWN DIAMOND REPORT

October 10, 2025
 IGI Report Number **LG741528163**
 Description **LABORATORY GROWN DIAMOND**
 Shape and Cutting Style **HEART BRILLIANT**
 Measurements **5.62 X 6.59 X 4.05 MM**

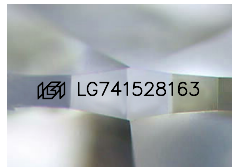
GRADING RESULTS

Carat Weight **0.92 CARAT**
 Color Grade **F**
 Clarity Grade **VVS 2**

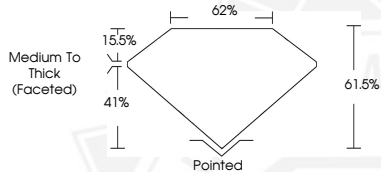
ADDITIONAL GRADING INFORMATION

Polish **EXCELLENT**
 Symmetry **EXCELLENT**
 Fluorescence **NONE**
 Inscription(s) **IGI LG741528163**

Comments: As Grown - No indication of post-growth treatment.
 This Laboratory Grown Diamond was created by High Pressure High Temperature (HPHT) growth process.
 Type II



Sample Image Used



October 10, 2025
IGI Report Number LG741528163
HEART BRILLIANT
LABORATORY GROWN DIAMOND
5.62 X 6.59 X 4.05 MM
 Carat Weight **0.92 CARAT**
 Color Grade **F**
 Clarity Grade **VVS 2**
 Polish **EXCELLENT**
 Symmetry **EXCELLENT**
 Fluorescence **NONE**
 Inscription(s) **IGI LG741528163**
 Comments: As Grown - No indication of post-growth treatment. This Laboratory Grown Diamond was created by High Pressure High Temperature (HPHT) growth process. Type II

THIS DOCUMENT WAS PRODUCED WITH THE FOLLOWING SECURITY MEASURES: SPECIAL DOCUMENT PAPER, INK SCREENS, WATERMARK, BACKGROUND DESIGNS, HOLOGRAM AND OTHER SECURITY FEATURES NOT LISTED AND DO EXCEED DOCUMENT SECURITY INDUSTRY GUIDELINES.