



November 11, 2025  
**IGI Report Number** LG747569211  
**CUT CORNERED RECTANGULAR  
 MODIFIED BRILLIANT  
 LABORATORY GROWN DIAMOND**  
**7.17 X 4.87 X 2.89 MM**  
**Carat Weight** 0.90 CARAT  
**Color Grade** E  
**Clarity Grade** VS 1  
**Polish** EXCELLENT  
**Symmetry** EXCELLENT  
**Fluorescence** NONE  
**Inscription(s)** LG747569211

**LABORATORY GROWN DIAMOND REPORT**

November 11, 2025  
 IGI Report Number **LG747569211**  
 Description **LABORATORY GROWN DIAMOND**  
 Shape and Cutting Style **CUT CORNERED RECTANGULAR MODIFIED  
 BRILLIANT**  
 Measurements **7.17 X 4.87 X 2.89 MM**

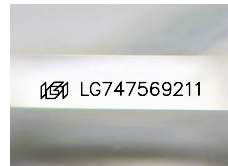
**GRADING RESULTS**

**Carat Weight** 0.90 CARAT  
**Color Grade** E  
**Clarity Grade** VS 1

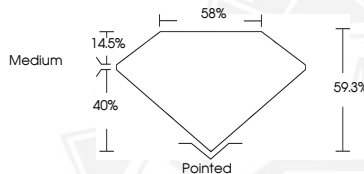
**ADDITIONAL GRADING INFORMATION**

**Polish** EXCELLENT  
**Symmetry** EXCELLENT  
**Fluorescence** NONE  
**Inscription(s)** LG747569211

Comments: This Laboratory Grown Diamond was created by  
 Chemical Vapor Deposition (CVD) growth process.  
 Type IIa



Sample Image Used



November 11, 2025  
**IGI Report Number** LG747569211  
**CUT CORNERED RECTANGULAR  
 MODIFIED BRILLIANT  
 LABORATORY GROWN DIAMOND**  
**7.17 X 4.87 X 2.89 MM**  
**Carat Weight** 0.90 CARAT  
**Color Grade** E  
**Clarity Grade** VS 1  
**Polish** EXCELLENT  
**Symmetry** EXCELLENT  
**Fluorescence** NONE  
**Inscription(s)** LG747569211  
 Comments: This Laboratory Grown  
 Diamond was created by  
 Chemical Vapor Deposition (CVD)  
 growth process. Type IIa



THIS DOCUMENT WAS PRODUCED WITH THE FOLLOWING SECURITY MEASURES: SPECIAL DOCUMENT PAPER, INK SCREENS, WATERMARK, BACKGROUND DESIGNS, HOLOGRAM AND OTHER SECURITY FEATURES NOT LISTED AND DO EXCEED DOCUMENT SECURITY INDUSTRY GUIDELINES.