



ELECTRONIC COPY

LABORATORY GROWN DIAMOND REPORT

November 19, 2025	
IGI Report Number	LG750523090
Description	LABORATORY GROWN DIAMOND
Shape and Cutting Style	ROUND BRILLIANT
Measurements	7.81 - 7.86 X 4.89 MM

GRADING RESULTS

Carat Weight	1.87 CARAT
Color Grade	E
Clarity Grade	VVS 2
Cut Grade	IDEAL

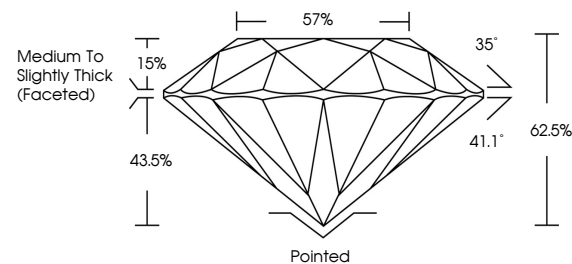
ADDITIONAL GRADING INFORMATION

Polish	EXCELLENT
Symmetry	EXCELLENT
Fluorescence	NONE
Inscription(s)	 LG750523090

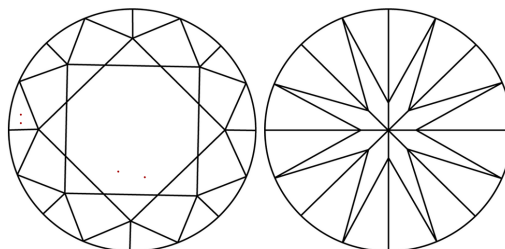
Comments: This Laboratory Grown Diamond was created by Chemical Vapor Deposition (CVD) growth process.
Type IIa

LG750523090
Report verification at igi.org

PROPORTIONS

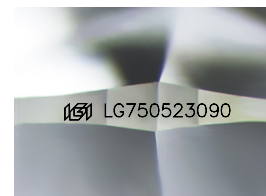


CLARITY CHARACTERISTICS



KEY TO SYMBOLS

Red symbols indicate internal characteristics.
Green symbols indicate external characteristics.



Sample Image Used

COLOR

D E F G H I J Faint Very Light Light

CLARITY

FL	IF	VVS ¹⁻²	VS ¹⁻²	SI ¹⁻²	I ¹⁻³
Flawless	Internally Flawless	Very Very Slightly Included	Very Slightly Included	Slightly Included	Included

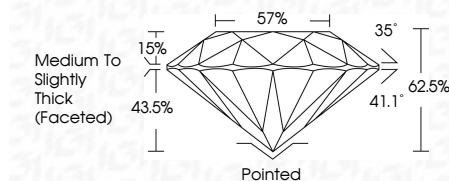
LABORATORY GROWN DIAMOND REPORT



November 19, 2025	
IGI Report Number	LG750523090
Description	LABORATORY GROWN DIAMOND
Shape and Cutting Style	ROUND BRILLIANT
Measurements	7.81 - 7.86 X 4.89 MM

GRADING RESULTS

Carat Weight	1.87 CARAT
Color Grade	E
Clarity Grade	VVS 2
Cut Grade	IDEAL



ADDITIONAL GRADING INFORMATION

Polish	EXCELLENT
Symmetry	EXCELLENT
Fluorescence	NONE
Inscription(s)	163 LG750523090
Comments: This Laboratory Grown Diamond was created by Chemical Vapor Deposition (CVD) growth process.	
Type IIa	



© IGI 2020, International Gemological Institute

FD - 10 20



THIS DOCUMENT WAS PRODUCED WITH THE FOLLOWING SECURITY MEASURES: SPECIAL DOCUMENT PAPER, INK SCREENS, WATERMARK, BACKGROUND DESIGNS, HOLOGRAM AND OTHER SECURITY FEATURES NOT LISTED AND DO EXCEED DOCUMENT SECURITY INDUSTRY GUIDELINES

www.igi.org

November 19, 2025
 IGI Report No LG750523090
 ROUND BRILLIANT

ROUND BRILLIANT	1.87 CARAT	1.81 - 1.86 X 4.89 MM	Color Grade	Clarity Grade	VVS 2	57%	Medium to Slightly Thick Faceted	Pointed	EXCELLENT	EXCELLENT	NONE	VERY GOOD
	Carat Weight		Color Grade	Clarity Grade	VVS 2	57%	Medium to Slightly Thick Faceted	Pointed	EXCELLENT	EXCELLENT	NONE	VERY GOOD
	Depth		Color Grade	Clarity Grade	VVS 2	57%	Medium to Slightly Thick Faceted	Pointed	EXCELLENT	EXCELLENT	NONE	VERY GOOD
	Table		Color Grade	Clarity Grade	VVS 2	57%	Medium to Slightly Thick Faceted	Pointed	EXCELLENT	EXCELLENT	NONE	VERY GOOD
	Grades		Color Grade	Clarity Grade	VVS 2	57%	Medium to Slightly Thick Faceted	Pointed	EXCELLENT	EXCELLENT	NONE	VERY GOOD
	Culet		Color Grade	Clarity Grade	VVS 2	57%	Medium to Slightly Thick Faceted	Pointed	EXCELLENT	EXCELLENT	NONE	VERY GOOD
	Polish		Color Grade	Clarity Grade	VVS 2	57%	Medium to Slightly Thick Faceted	Pointed	EXCELLENT	EXCELLENT	NONE	VERY GOOD
	Symmetry		Color Grade	Clarity Grade	VVS 2	57%	Medium to Slightly Thick Faceted	Pointed	EXCELLENT	EXCELLENT	NONE	VERY GOOD
	Fluorescence		Color Grade	Clarity Grade	VVS 2	57%	Medium to Slightly Thick Faceted	Pointed	EXCELLENT	EXCELLENT	NONE	VERY GOOD
	Comments		Color Grade	Clarity Grade	VVS 2	57%	Medium to Slightly Thick Faceted	Pointed	EXCELLENT	EXCELLENT	NONE	VERY GOOD

Comments:
This Laboratory Grown Diamond was
created by Chemical Vapor Deposition
(CVD) growth process.