



**INTERNATIONAL
GEMOLOGICAL
INSTITUTE**

ELECTRONIC COPY

LABORATORY GROWN DIAMOND REPORT

November 26, 2025	
IGI Report Number	LG750558086
Description	LABORATORY GROWN DIAMOND
Shape and Cutting Style	CUT CORNERED RECTANGULAR MODIFIED BRILLIANT
Measurements	8.76 X 6.33 X 4.27 MM

GRADING RESULTS

Carat Weight	2.03 CARATS
Color Grade	F
Clarity Grade	VS 1

ADDITIONAL GRADING INFORMATION

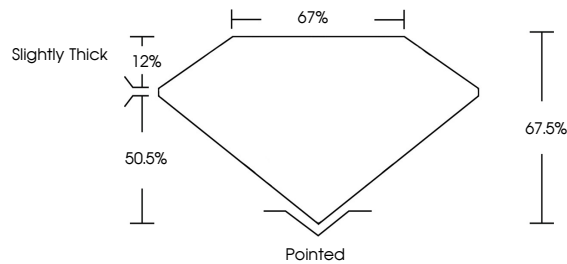
Polish	EXCELLENT
Symmetry	EXCELLENT
Fluorescence	NONE

Inscription(s) LG750558086

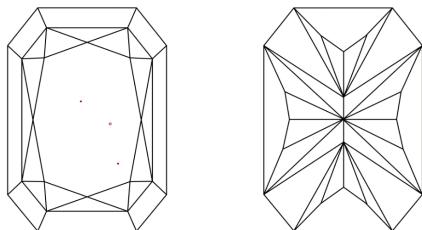
Comments: This Laboratory Grown Diamond was created by Chemical Vapor Deposition (CVD) growth process.
Type IIa

LG750558086
Report verification at lgi.org

PROPORTIONS

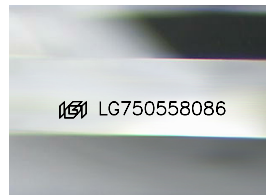


CLARITY CHARACTERISTICS



KEY TO SYMBOLS

Red symbols indicate internal characteristics.
Green symbols indicate external characteristics.



Sample Image Used

COLOR

D E F G H I J Faint Very Light Light

CLARITY

FL	IF	WS ¹⁻²	VS ¹⁻²	SI ¹⁻²	I ¹⁻³
----	----	-------------------	-------------------	-------------------	------------------

Flawless	Internally Flawless	Very Very Slightly Included	Very Slightly Included	Slightly Included	Included
----------	---------------------	-----------------------------	------------------------	-------------------	----------

LABORATORY GROWN DIAMOND REPORT



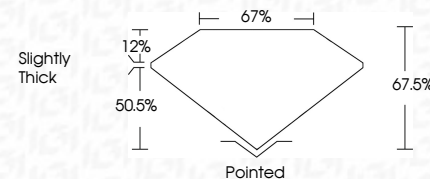
November 26, 2025	
IGI Report Number	LG750558086
Description	LABORATORY GROWN DIAMOND

Shape and Cutting Style

Measurements **8.76 X 6.33 X 4.27 MM**

GRADING RESULTS

Carat Weight	2.03 CARATS
Color Grade	F
Clarity Grade	VS 1



ADDITIONAL GRADING INFORMATION

Polish	EXCELLENT
Symmetry	EXCELLENT
Fluorescence	NONE
Inscription(s)	(15) LG75055808

Comments: This Laboratory Grown Diamond was created by Chemical Vapor Deposition (CVD) growth process.
Type IIa



IG



© IGI 2020, International Gemological Institute

FD - 10 20

www.igi.org

THIS DOCUMENT WAS PRODUCED WITH THE FOLLOWING SECURITY MEASURES: SPECIAL DOCUMENT PAPER, INK SCREENS, WATERMARK, BACKGROUND DESIGNS, HOLOGRAM AND OTHER SECURITY FEATURES NOT LISTED AND DO EXCEED DOCUMENT SECURITY INDUSTRY GUIDELINES

November 26, 2025	2.03 CARATS
IGI REPORT NO. I675055006	
CUI CORNERED RECT. MODIFIED BRILLIANT	
8.75 X 6.33 X 4.27 MM	
Carat Weight	F
Color Grade	Vs1
Clarity Grade	67.5%
Depth	67%
Table	
Girdle	Slightly Thick
Culet	Pointed
Polish	EXCELLENT
Symmetry	EXCELLENT
Fluorescence	NONE
Inscriptions	681 LG75055006
Comments:	
	Chemically Enhanced Type IIa
	Grown Diamond was
	created by Chemical Vapor Deposition
	(CVD) growth process.
	Type IIa