



ELECTRONIC COPY

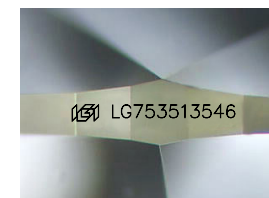
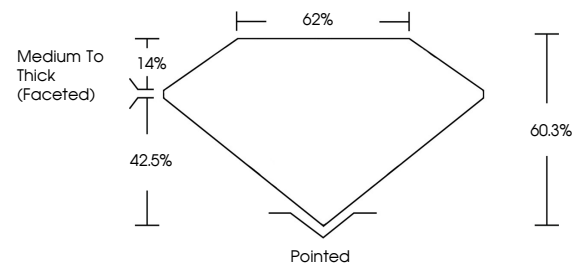
LG753513546
Report verification at igi.org



December 3, 2025
IGI Report Number **LG753513546**
Description **LABORATORY GROWN DIAMOND**
Shape and Cutting Style **HEART BRILLIANT**
Measurements **6.95 X 8.13 X 4.90 MM**
GRADING RESULTS
Carat Weight **1.61 CARAT**
Color Grade **E**
Clarity Grade **VS 1**

December 3, 2025
IGI Report Number **LG753513546**
Description **LABORATORY GROWN DIAMOND**
Shape and Cutting Style **HEART BRILLIANT**
Measurements **6.95 X 8.13 X 4.90 MM**

PROPORTIONS

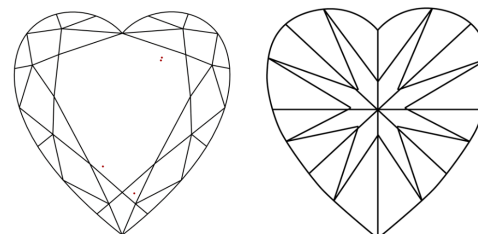


Sample Image Used

GRADING RESULTS

Carat Weight **1.61 CARAT**
Color Grade **E**
Clarity Grade **VS 1**

CLARITY CHARACTERISTICS



KEY TO SYMBOLS

Red symbols indicate internal characteristics.
Green symbols indicate external characteristics.

ADDITIONAL GRADING INFORMATION

Polish **EXCELLENT**
Symmetry **EXCELLENT**
Fluorescence **NONE**
Inscription(s) **IGI LG753513546**

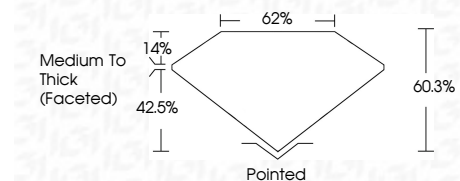
Comments: This Laboratory Grown Diamond was created by Chemical Vapor Deposition (CVD) growth process. Type IIa

COLOR

D E F G H I J Faint Very Light Light

CLARITY

FL	IF	VS ¹⁻²	VS ¹⁻²	SI ¹⁻²	I ¹⁻³
Flawless	Internally Flawless	Very Very Slightly Included	Very Slightly Included	Slightly Included	Included



ADDITIONAL GRADING INFORMATION

Polish **EXCELLENT**
Symmetry **EXCELLENT**
Fluorescence **NONE**
Inscription(s) **IGI LG753513546**
Comments: This Laboratory Grown Diamond was created by Chemical Vapor Deposition (CVD) growth process. Type IIa



IGI



December 3, 2025
IGI Report No LG753513546
HEART BRILLIANT
6.95 X 8.13 X 4.90 MM
1.61 CARAT
E
VS 1
60.3%
62%
Medium To Thick (Faceted)
Pointed
EXCELLENT
EXCELLENT
NONE
IGI LG753513546
Comments: This Laboratory Grown Diamond was created by Chemical Vapor Deposition (CVD) growth process. Type IIa