



**ELECTRONIC COPY**

## LABORATORY GROWN DIAMOND REPORT

LG755503094  
Report verification at [igi.org](https://igi.org)

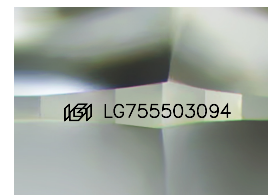
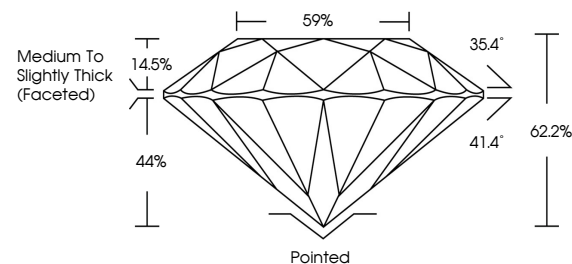
December 5, 2025	
IGI Report Number	LG755503094
Description	LABORATORY GROWN DIAMOND
Shape and Cutting Style	ROUND BRILLIANT
Measurements	7.68 - 7.71 X 4.78 MM
GRADING RESULTS	
Carat Weight	1.73 CARAT
Color Grade	F
Clarity Grade	VS 1
Cut Grade	IDEAL

### ADDITIONAL GRADING INFORMATION

Polish	EXCELLENT
Symmetry	EXCELLENT
Fluorescence	NONE
Inscription(s)	15 LG755503094

Comments: This Laboratory Grown Diamond was created by Chemical Vapor Deposition (CVD) growth process.  
Type IIa

## PROPORTIONS



Sample Image Used

## COLOR

D E F G H I J Faint Very Light Light

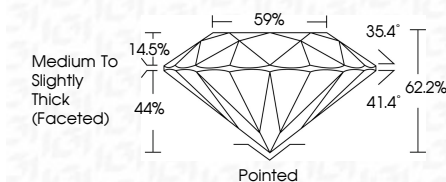
## CLARITY

FL	IF	VVS <sup>1-2</sup>	VS <sup>1-2</sup>	SI <sup>1-2</sup>	I <sup>1-3</sup>
Flawless	Internally Flawless	Very Very Slightly Included	Very Slightly Included	Slightly Included	Included

## LABORATORY GROWN DIAMOND REPORT



December 5, 2025	
IGI Report Number	LG755503094
Description	LABORATORY GROWN DIAMOND
Shape and Cutting Style	ROUND BRILLIANT
Measurements	7.68 - 7.71 X 4.78 MM
GRADING RESULTS	
Carat Weight	1.73 CARAT
Color Grade	F
Clarity Grade	VS 1
Cut Grade	IDEAL



### ADDITIONAL GRADING INFORMATION

Polish	EXCELLENT
Symmetry	EXCELLENT
Fluorescence	NONE
Inscription(s)	 LG75550309A
<p>Comments: This Laboratory Grown Diamond was created by Chemical Vapor Deposition (CVD) growth process.</p> <p>Type IIa</p>	



© IGI 2020, International Gemological Institute

FD - 10 20



THIS DOCUMENT WAS PRODUCED WITH THE FOLLOWING SECURITY MEASURES: SPECIAL DOCUMENT PAPER, INK SCREENS, WATERMARK, BACKGROUND DESIGNS, HOLOGRAM, AND OTHER SECURITY FEATURES NOT LISTED AND DO EXCEED DOCUMENT SECURITY INDUSTRY GUIDELINES.

**www.igi.org**

December 5, 2025  
 IGI Report No LG755503094  
 ROUND BRILLIANT

7.68 - 7.71 X 4.78 MM

1.68 - 7.71 X 4.78 MM  
Carat Weight 1.73 CARAT

Color Grade	F
-------------	---

Clarity Grade	VS1
VS1	

Cut Grade	IDEAL
Depth	62.2%

Depth	62.2%
Table	59%

Girdle Medium To Slightly Thick (Faceted)

	Thick (Faceted)	Pointed
Culet		

Culet	Pointed
Polish	EXCELLENT

Symmetry	EXCELLENT
Glucose	NONE

Fluorescence	NONE
Inscription(s)	151 LG755503094

15/11/2017 10:00:00

**Comments:**  
This Laboratory Grown Diamond was  
certified by Chemical Vapor Deposition

created by Chemical Vapor Deposition (CVD) growth process.

Type IIa