

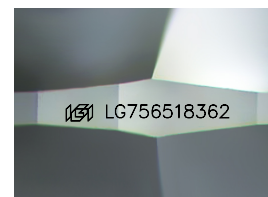
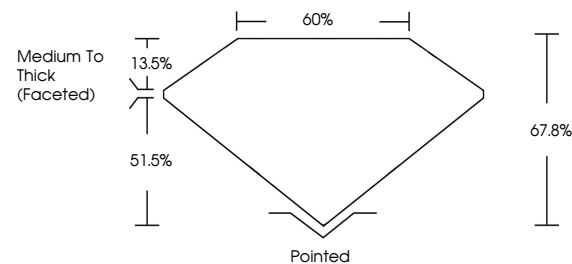


**ELECTRONIC COPY**

## LABORATORY GROWN DIAMOND REPORT

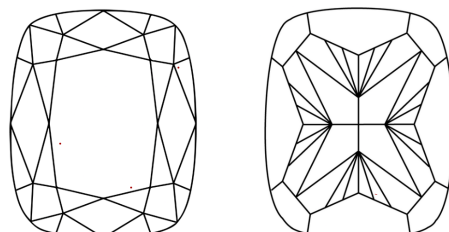
LG756518362  
Report verification at [igi.org](https://igi.org)

## PROPORTIONS



Sample Image Used

## CLARITY CHARACTERISTICS



## KEY TO SYMBOLS

Red symbols indicate internal characteristics.  
Green symbols indicate external characteristics.

## COLOR

D E F G H I J Faint Very Light Light

## CLARITY

FL	IF	VVS <sup>1-2</sup>	VS <sup>1-2</sup>	SI <sup>1-2</sup>	I <sup>1-3</sup>
Flawless	Internally Flawless	Very Very Slightly Included	Very Slightly Included	Slightly Included	Included

## LABORATORY GROWN DIAMOND REPORT



December 12, 2025

IGI Report Number **LG756518362**

Description	LABORATORY GROWN DIAMOND
-------------	--------------------------

Shape and Cutting Style **CUSHION MODIFIED  
BRILLIANT**

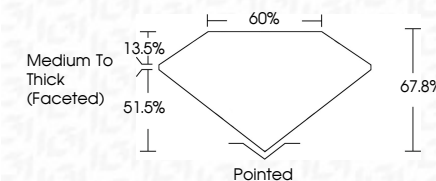
Measurements **13.74 X 11.32 X 7.67 MM**

## GRADING RESULTS

Carat Weight **10.08 CARATS**

Color Grade **F**

Clarity Grade **VVS 2**



### ADDITIONAL GRADING INFORMATION

Polish **EXCELLENT**Symmetry **EXCELLENT**Fluorescence **NONE**Inscription(s)  LG756518362

Comments: This Laboratory Grown Diamond was created by Chemical Vapor Deposition (CVD) growth process.  
Type IIa



© IGI 2020, International Gemological Institute

FD - 10 20



THIS DOCUMENT WAS PRODUCED WITH THE FOLLOWING SECURITY MEASURES: SPECIAL DOCUMENT PAPER, INK SCREENS, WATERMARK, BACKGROUND DESIGNS, HOLOGRAM AND OTHER SECURITY FEATURES NOT LISTED AND DO EXCEED DOCUMENT SECURITY INDUSTRY GUIDELINES

**www.igi.org**

December 12, 2025  
GI Report No LG756518362  
CUSHION MODIFIED BRILLANT

13.74 X 11.32 X 7.67 MM	10.08 CARATS
Carat Weight	F
Color Grade	VVS 2
Clarity Grade	67.8%
Depth	60%
Table	Medium to Thick (faceted)
Girdle	Pointed
Fluorescence	EXCELLENT
Symmetry	EXCELLENT
Fluorescence	NONE
Fluorescence	gem/1275151930

**Comments:**  
This Laboratory Grown Diamond was created by Chemical Vapor Deposition (CVD) growth process.