

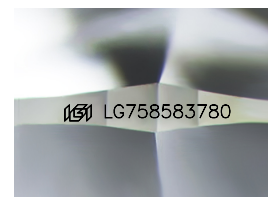
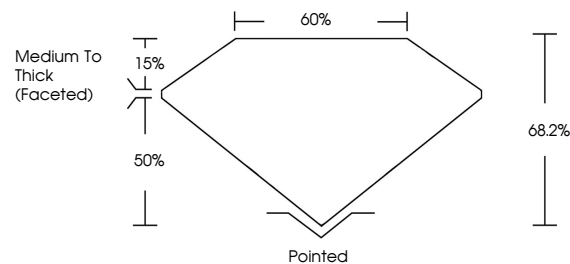


ELECTRONIC COPY

LABORATORY GROWN DIAMOND REPORT

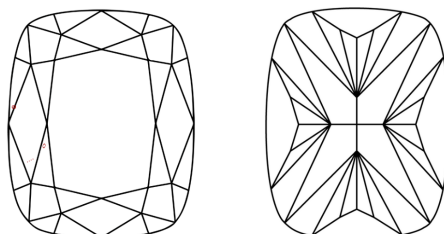
LG758583780
Report verification at igi.org

PROPORTIONS



Sample Image Used

CLARITY CHARACTERISTICS



KEY TO SYMBOLS

Red symbols indicate internal characteristics.
Green symbols indicate external characteristics.

COLOR

D E F G H I J Faint Very Light Light

CLARITY

| FL | IF | VVS ¹⁻² | VS ¹⁻² | SI ¹⁻² | I ¹⁻³ |
|----------|---------------------|-----------------------------|------------------------|-------------------|------------------|
| Flawless | Internally Flawless | Very Very Slightly Included | Very Slightly Included | Slightly Included | Included |

LABORATORY GROWN DIAMOND REPORT



December 22, 2025

IGI Report Number **LG758583780**

| | |
|-------------|--------------------------|
| Description | LABORATORY GROWN DIAMOND |
|-------------|--------------------------|

Shape and Cutting Style **CUSHION MODIFIED
BRILLIANT**

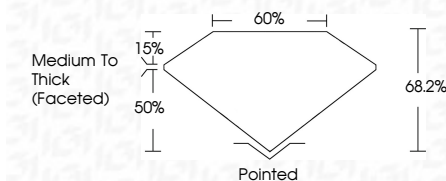
Measurements **8.07 X 5.88 X 4.01 MM**

GRADING RESULTS

Carat Weight **1.51 CARAT**

Color Grade **F**

Clarity Grade VS 1



ADDITIONAL GRADING INFORMATION

Polish **EXCELLENT**Symmetry **EXCELLENT**Fluorescence **NONE**Inscription(s) LG758583780

Comments: This Laboratory Grown Diamond was created by Chemical Vapor Deposition (CVD) growth process.
Type IIa



www.igi.org



© IGI 2020, International Gemological Institute

FD - 10 20



THIS DOCUMENT WAS PRODUCED WITH THE FOLLOWING SECURITY MEASURES: SPECIAL DOCUMENT PAPER, INK SCREENS, WATERMARK, BACKGROUND DESIGNS, HOLOGRAM AND OTHER SECURITY FEATURES NOT LISTED AND DO EXCEED DOCUMENT SECURITY INDUSTRY GUIDELINES

December 22, 2025
GI Report No LG758583780
CUSHION MODIFIED BRILLIANT

| | |
|-----------------------|--------------------------|
| 3.07 X 5.88 X 4.01 MM | 1.51 CARAT F |
| Color Weight | VS 1 |
| Color Grade | 66.2% |
| Clarity Grade | 60% |
| Depth | Medium To Thick (graded) |
| Table | Pointed |
| Grade | EXCELLENT |
| Culet | EXCELLENT |
| Polish | NONE |
| Symmetry | EXCELLENT |
| Fluorescence | NONE |
| Comments | 4011 C1751823760 |

Comments:
This Laboratory Grown Diamond was created by Chemical Vapor Deposition (CVD) growth process.