



ELECTRONIC COPY

LG759509584
Report verification at igi.org



January 19, 2026

IGI Report Number **LG759509584**

Description **LABORATORY GROWN DIAMOND**

Shape and Cutting Style **TRIANGULAR BRILLIANT**

Measurements **7.18 X 7.21 X 4.20 MM**

GRADING RESULTS

Carat Weight **1.22 CARAT**

Color Grade **D**

Clarity Grade **VVS 2**

January 19, 2026
IGI Report Number **LG759509584**
Description **LABORATORY GROWN DIAMOND**
Shape and Cutting Style **TRIANGULAR BRILLIANT**
Measurements **7.18 X 7.21 X 4.20 MM**

GRADING RESULTS

Carat Weight **1.22 CARAT**

Color Grade **D**

Clarity Grade **VVS 2**

ADDITIONAL GRADING INFORMATION

Polish **EXCELLENT**

Symmetry **EXCELLENT**

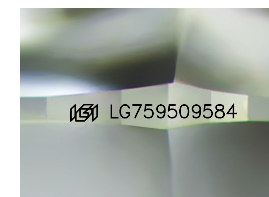
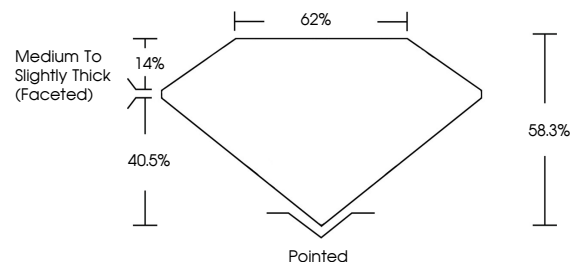
Fluorescence **NONE**

Inscription(s) **LG759509584**

Comments: As Grown - No indication of post-growth treatment.

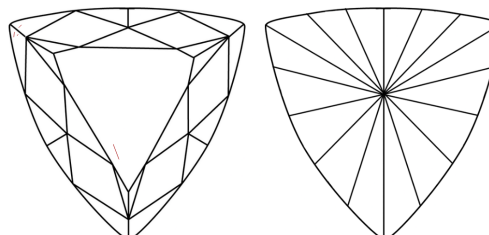
This Laboratory Grown Diamond was created by High Pressure High Temperature (HPHT) growth process. Type II

PROPORTIONS



Sample Image Used

CLARITY CHARACTERISTICS



KEY TO SYMBOLS

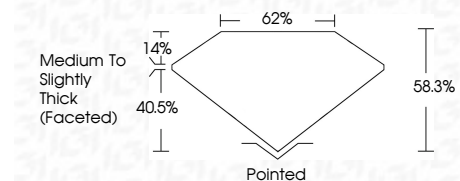
Red symbols indicate internal characteristics.
Green symbols indicate external characteristics.

COLOR

D E F G H I J Faint Very Light Light

CLARITY

FL	IF	VVS ¹⁻²	VS ¹⁻²	SI ¹⁻²	I ¹⁻³
Flawless	Internally Flawless	Very Very Slightly Included	Very Slightly Included	Slightly Included	Included



ADDITIONAL GRADING INFORMATION

Polish **EXCELLENT**

Symmetry **EXCELLENT**

Fluorescence **NONE**

Inscription(s) **LG759509584**

Comments: As Grown - No indication of post-growth treatment.

This Laboratory Grown Diamond was created by High Pressure High Temperature (HPHT) growth process. Type II



IGI



January 19, 2026
IGI Report No LG759509584
TRIANGULAR BRILLIANT
7.18 X 7.21 X 4.20 MM
1.22 CARAT
D
VVS 2
62%
58.3%
Medium to Slightly Thick (Faceted)
Pointed
EXCELLENT
EXCELLENT
NONE
None
 LG759509584
Comments: As Grown - No indication of post-growth treatment. This Laboratory Grown Diamond was created by High Pressure High Temperature (HPHT) growth process. Type II