



**ELECTRONIC COPY**

LG759509589  
Report verification at igi.org



January 19, 2026  
IGI Report Number **LG759509589**  
Description **LABORATORY GROWN DIAMOND**  
Shape and Cutting Style **HALF MOON MODIFIED BRILLIANT**  
Measurements **8.82 X 5.64 X 4.05 MM**  
**GRADING RESULTS**  
Carat Weight **1.43 CARAT**  
Color Grade **D**  
Clarity Grade **VVS 1**

**LABORATORY GROWN DIAMOND REPORT**

January 19, 2026  
IGI Report Number **LG759509589**  
Description **LABORATORY GROWN DIAMOND**  
Shape and Cutting Style **HALF MOON MODIFIED BRILLIANT**  
Measurements **8.82 X 5.64 X 4.05 MM**

**GRADING RESULTS**

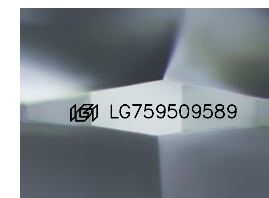
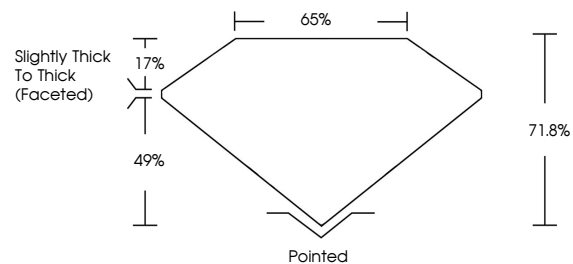
Carat Weight **1.43 CARAT**  
Color Grade **D**  
Clarity Grade **VVS 1**

**ADDITIONAL GRADING INFORMATION**

Polish **EXCELLENT**  
Symmetry **EXCELLENT**  
Fluorescence **NONE**  
Inscription(s) **IGI LG759509589**

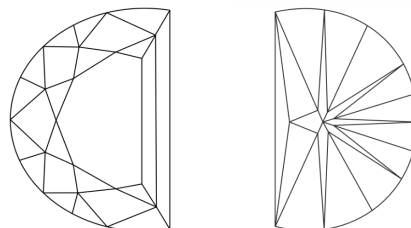
Comments: As Grown - No indication of post-growth treatment.  
This Laboratory Grown Diamond was created by High Pressure High Temperature (HPHT) growth process. Type II

**PROPORTIONS**



Sample Image Used

**CLARITY CHARACTERISTICS**



**KEY TO SYMBOLS**

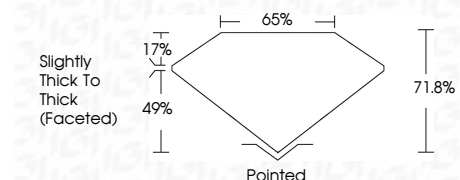
Red symbols indicate internal characteristics.  
Green symbols indicate external characteristics.

**COLOR**

D E F G H I J Faint Very Light Light

**CLARITY**

FL	IF	VVS <sup>1-2</sup>	VS <sup>1-2</sup>	SI <sup>1-2</sup>	I <sup>1-3</sup>
Flawless	Internally Flawless	Very Very Slightly Included	Very Slightly Included	Slightly Included	Included



**ADDITIONAL GRADING INFORMATION**

Polish **EXCELLENT**  
Symmetry **EXCELLENT**  
Fluorescence **NONE**  
Inscription(s) **IGI LG759509589**  
Comments: As Grown - No indication of post-growth treatment.  
This Laboratory Grown Diamond was created by High Pressure High Temperature (HPHT) growth process. Type II



January 19, 2026  
IGI Report No LG759509589  
**HALF MOON MODIFIED BRILLIANT**  
8.82 X 5.64 X 4.05 MM  
Carat Weight **1.43 CARAT**  
Color Grade **D**  
Clarity Grade **VVS 1**  
Depth **71.0%**  
Table **65%**  
Girdle **Slightly Thick To Thick (Faceted)**  
Culet **Pointed**  
Polish **EXCELLENT**  
Symmetry **EXCELLENT**  
Fluorescence **NONE**  
Inscription(s) **IGI LG759509589**  
Comments: As Grown - No indication of post-growth treatment.  
This Laboratory Grown Diamond was created by High Pressure High Temperature (HPHT) growth process. Type II