



ELECTRONIC COPY

LG759509590
Report verification at igi.org



January 17, 2026
IGI Report Number **LG759509590**
Description **LABORATORY GROWN DIAMOND**
Shape and Cutting Style **PENTAGONAL MODIFIED BRILLIANT**
Measurements **8.36 X 7.69 X 4.12 MM**
GRADING RESULTS
Carat Weight **1.43 CARAT**
Color Grade **D**
Clarity Grade **VS 1**

LABORATORY GROWN DIAMOND REPORT

January 17, 2026
IGI Report Number **LG759509590**
Description **LABORATORY GROWN DIAMOND**
Shape and Cutting Style **PENTAGONAL MODIFIED BRILLIANT**
Measurements **8.36 X 7.69 X 4.12 MM**

GRADING RESULTS

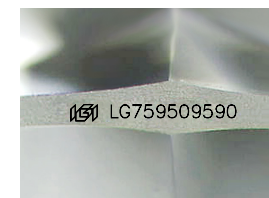
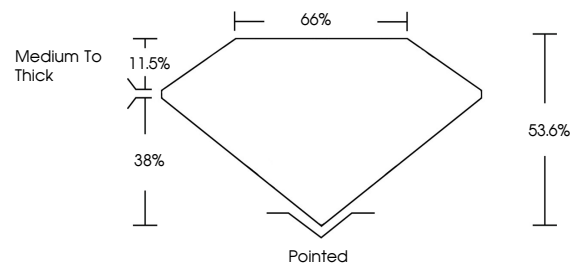
Carat Weight **1.43 CARAT**
Color Grade **D**
Clarity Grade **VS 1**

ADDITIONAL GRADING INFORMATION

Polish **EXCELLENT**
Symmetry **EXCELLENT**
Fluorescence **NONE**
Inscription(s) **IGI LG759509590**

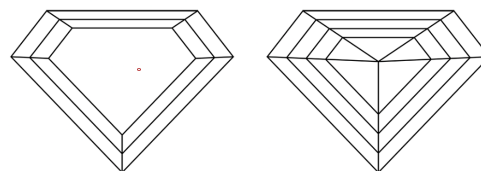
Comments: As Grown - No indication of post-growth treatment.
This Laboratory Grown Diamond was created by High Pressure High Temperature (HPHT) growth process.
Type II

PROPORTIONS



Sample Image Used

CLARITY CHARACTERISTICS



KEY TO SYMBOLS

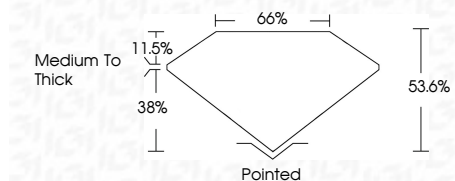
Red symbols indicate internal characteristics.
Green symbols indicate external characteristics.

COLOR

D E F G H I J Faint Very Light Light

CLARITY

FL	IF	VS ¹⁻²	VVS ¹⁻²	S ¹⁻²	I ¹⁻³
Flawless	Internally Flawless	Very Very Slightly Included	Very Slightly Included	Slightly Included	Included



ADDITIONAL GRADING INFORMATION

Polish **EXCELLENT**
Symmetry **EXCELLENT**
Fluorescence **NONE**
Inscription(s) **IGI LG759509590**
Comments: As Grown - No indication of post-growth treatment.
This Laboratory Grown Diamond was created by High Pressure High Temperature (HPHT) growth process.
Type II



January 17, 2026
IGI Report No LG759509590
PENTAGONAL MODIFIED BRILLIANT
8.36 X 7.69 X 4.12 MM
1.43 CARAT
D
VS 1
66.6%
38%
53.6%
Medium To Thick
Pointed
EXCELLENT
EXCELLENT
NONE
IGI LG759509590
Comments: As Grown - No indication of post-growth treatment.
This Laboratory Grown Diamond was created by High Pressure High Temperature (HPHT) growth process.
Type II