



ELECTRONIC COPY

LG761544499
Report verification at igi.org



January 28, 2026

IGI Report Number **LG761544499**

Description **LABORATORY GROWN DIAMOND**

Shape and Cutting Style **EMERALD CUT**

Measurements **9.41 X 6.38 X 4.71 MM**

GRADING RESULTS

Carat Weight **3.01 CARATS**

Color Grade **G**

Clarity Grade **VVS 2**

January 28, 2026
IGI Report Number **LG761544499**
Description **LABORATORY GROWN DIAMOND**
Shape and Cutting Style **EMERALD CUT**
Measurements **9.41 X 6.38 X 4.71 MM**

GRADING RESULTS

Carat Weight **3.01 CARATS**

Color Grade **G**

Clarity Grade **VVS 2**

ADDITIONAL GRADING INFORMATION

Polish **EXCELLENT**

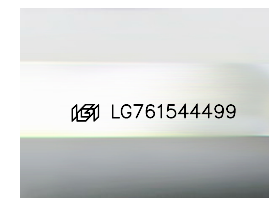
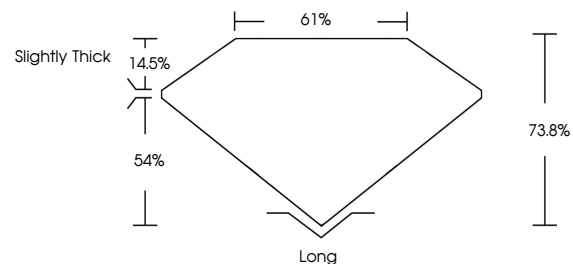
Symmetry **EXCELLENT**

Fluorescence **NONE**

Inscription(s) **IGI LG761544499**

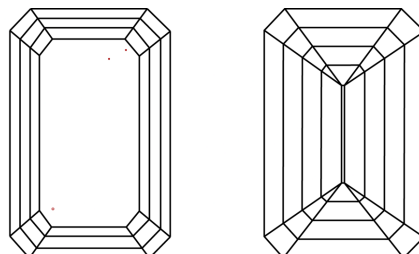
Comments: This Laboratory Grown Diamond was created by Chemical Vapor Deposition (CVD) growth process. Type IIa

PROPORTIONS



Sample Image Used

CLARITY CHARACTERISTICS



KEY TO SYMBOLS

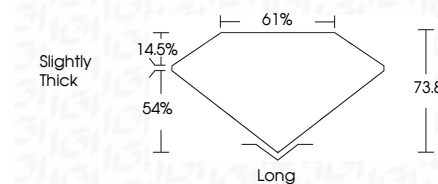
Red symbols indicate internal characteristics.
Green symbols indicate external characteristics.

COLOR

D E F G H I J Faint Very Light Light

CLARITY

FL	IF	VVS ¹⁻²	VS ¹⁻²	SI ¹⁻²	I ¹⁻³
Flawless	Internally Flawless	Very Very Slightly Included	Very Slightly Included	Slightly Included	Included



ADDITIONAL GRADING INFORMATION

Polish **EXCELLENT**

Symmetry **EXCELLENT**

Fluorescence **NONE**

Inscription(s) **IGI LG761544499**

Comments: This Laboratory Grown Diamond was created by Chemical Vapor Deposition (CVD) growth process. Type IIa



IGI



January 28, 2026
IGI Report No LG761544499
EMERALD CUT

3.01 CARATS
G

9.41 X 6.38 X 4.71 MM

Carat Weight
Color Grade
Clarity Grade
Depth
Table
Girdle
Slightly Thick

73.8%
61%

Long
EXCELLENT
EXCELLENT
NONE
IGI LG761544499

Culet
Polish
Symmetry
Fluorescence
Inscription(s)

Comments: This Laboratory Grown Diamond was created by Chemical Vapor Deposition (CVD) growth process. Type IIa