



**ELECTRONIC COPY**

## LABORATORY GROWN DIAMOND REPORT

LG764671154  
Report verification at [igi.org](https://igi.org)

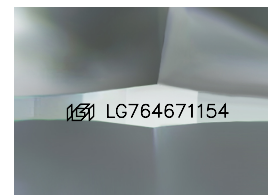
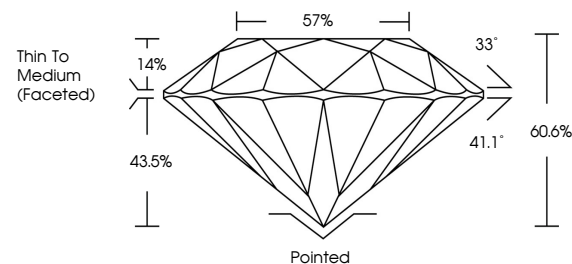
|                         |                          |
|-------------------------|--------------------------|
| January 17, 2026        |                          |
| IGI Report Number       | LG764671154              |
| Description             | LABORATORY GROWN DIAMOND |
| Shape and Cutting Style | ROUND BRILLIANT          |
| Measurements            | 6.69 - 6.71 X 4.06 MM    |
| GRADING RESULTS         |                          |
| Carat Weight            | 1.09 CARAT               |
| Color Grade             | D                        |
| Clarity Grade           | VVS 1                    |
| Cut Grade               | IDEAL                    |

### ADDITIONAL GRADING INFORMATION

|                |                |
|----------------|----------------|
| Polish         | EXCELLENT      |
| Symmetry       | EXCELLENT      |
| Fluorescence   | NONE           |
| Inscription(s) | 15 LG764671154 |

Comments: As Grown - No indication of post-growth treatment.  
This Laboratory Grown Diamond was created by High Pressure High Temperature (HPHT) growth process.  
Type II

## PROPORTIONS



Sample Image Used

COLOR

D E F G H I J Faint Very Light Light

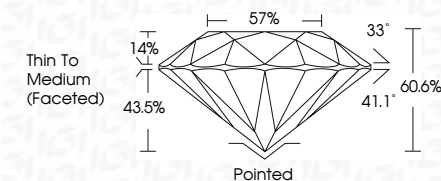
## CLARITY

| FL       | IF                  | VVS <sup>1-2</sup>          | VS <sup>1-2</sup>      | SI <sup>1-2</sup> | I <sup>1-3</sup> |
|----------|---------------------|-----------------------------|------------------------|-------------------|------------------|
| Flawless | Internally Flawless | Very Very Slightly Included | Very Slightly Included | Slightly Included | Included         |

## LABORATORY GROWN DIAMOND REPORT



|                         |                          |
|-------------------------|--------------------------|
| January 17, 2026        |                          |
| IGI Report Number       | LG764671154              |
| Description             | LABORATORY GROWN DIAMOND |
| Shape and Cutting Style | ROUND BRILLIANT          |
| Measurements            | 6.69 - 6.71 X 4.06 MM    |
| GRADING RESULTS         |                          |
| Carat Weight            | 1.09 CARAT               |
| Color Grade             | D                        |
| Clarity Grade           | VVS 1                    |
| Cut Grade               | IDEAL                    |



### ADDITIONAL GRADING INFORMATION

|  |                            |
|--|----------------------------|
| Polish   | EXCELLENT                  |
| Symmetry   | EXCELLENT                  |
| Fluorescence   | NONE                       |
| Inscription(s)   | <del>(G)</del> LG764671154 |
| Comments: As Grown - No indication of post-growth treatment.                                       |                            |
| This Laboratory Grown Diamond was created by High Pressure High Temperature (HPHT) growth process. |                            |
| Type II  |                            |



© IGI 2020, International Gemological Institute

FD - 10 20



THIS DOCUMENT WAS PRODUCED WITH THE FOLLOWING SECURITY MEASURES: SPECIAL DOCUMENT PAPER, INK SCREENS, WATERMARK, BACKGROUND DESIGNS, HOLOGRAM AND OTHER SECURITY FEATURES NOT LISTED AND DO EXCEED DOCUMENT SECURITY INDUSTRY GUIDELINES

**www.igi.org**

January 17, 2026  
 IGI Report No LG76  
 ROUND BRILLIANT

|                       |               |                        |
|-----------------------|---------------|------------------------|
| 6.69 - 6.71 X .406 MM | Carat Weight  | 1.09 CARAT             |
| Color Grade           | Color Grade   | D                      |
| Clarity Grade         | Clarity Grade | VVS 1                  |
| Cut Grade             | Cut Grade     | IDEAL                  |
| Depth                 | Depth         | 60.6%                  |
| Table                 | Table         | 57%                    |
| Girdle                | Girdle        | Thin To Medium (faced) |
| Culet                 | Culet         | Pointed                |
| Polish                | Polish        | EXCELLENT              |
| Symmetry              | Symmetry      | EXCELLENT              |
| Fluorescence          | Fluorescence  | NONE                   |
|                       |               | cert 12744671154       |

**Comments:**  
As Grown - No indication of post-growth treatment.