



ELECTRONIC COPY

LG764679407
Report verification at igi.org



January 12, 2026

IGI Report Number **LG764679407**

Description **LABORATORY GROWN DIAMOND**

Shape and Cutting Style **ROUND BRILLIANT**

Measurements **9.32 - 9.38 X 5.68 MM**

GRADING RESULTS

Carat Weight **3.05 CARATS**

Color Grade **E**

Clarity Grade **VVS 2**

Cut Grade **IDEAL**

January 12, 2026
IGI Report Number **LG764679407**
Description **LABORATORY GROWN DIAMOND**
Shape and Cutting Style **ROUND BRILLIANT**
Measurements **9.32 - 9.38 X 5.68 MM**

GRADING RESULTS

Carat Weight **3.05 CARATS**

Color Grade **E**

Clarity Grade **VVS 2**

Cut Grade **IDEAL**

ADDITIONAL GRADING INFORMATION

Polish **EXCELLENT**

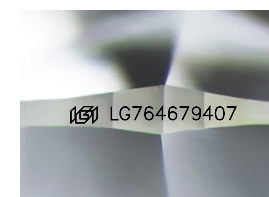
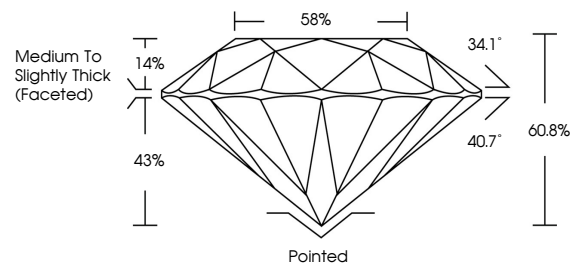
Symmetry **EXCELLENT**

Fluorescence **NONE**

Inscription(s) **IGI LG764679407**

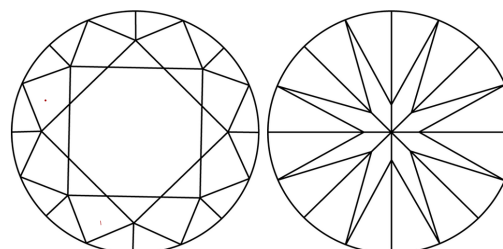
Comments: This Laboratory Grown Diamond was created by Chemical Vapor Deposition (CVD) growth process. Type IIa

PROPORTIONS



Sample Image Used

CLARITY CHARACTERISTICS



KEY TO SYMBOLS

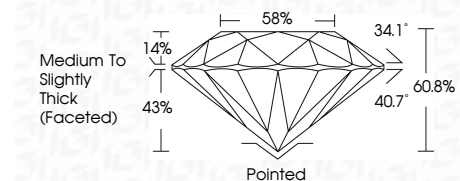
Red symbols indicate internal characteristics.
Green symbols indicate external characteristics.

COLOR

D E F G H I J Faint Very Light Light

CLARITY

FL	IF	VVS ¹⁻²	VS ¹⁻²	SI ¹⁻²	I ¹⁻³
Flawless	Internally Flawless	Very Very Slightly Included	Very Slightly Included	Slightly Included	Included



ADDITIONAL GRADING INFORMATION

Polish **EXCELLENT**

Symmetry **EXCELLENT**

Fluorescence **NONE**

Inscription(s) **IGI LG764679407**

Comments: This Laboratory Grown Diamond was created by Chemical Vapor Deposition (CVD) growth process. Type IIa



IGI



January 12, 2026	IGI Report No LG764679407	3.05 CARATS	E	Pointed	EXCELLENT	EXCELLENT	NONE	IGI LG764679407
9.32 - 9.38 X 5.68 MM	ROUND BRILLIANT	Carat Weight	VVS 2	Depth	IDEAL	60.8%	58%	Medium To Slightly Thick (Faceted)
		Color Grade	IDEAL	Girdle	60.8%	58%		
		Clarity Grade	VVS 2	Cut	EXCELLENT	EXCELLENT	NONE	
		Cut Grade	IDEAL	Polish	EXCELLENT	EXCELLENT	NONE	
		Table	14%	Symmetry	EXCELLENT	EXCELLENT	NONE	
		Depth	43%	Fluorescence	NONE			
		Girdle	34.1°	Inscription(s)	IGI LG764679407			
		Facet angle	40.7°	Comments:	This Laboratory Grown Diamond was created by Chemical Vapor Deposition (CVD) growth process. Type IIa			