



ELECTRONIC COPY

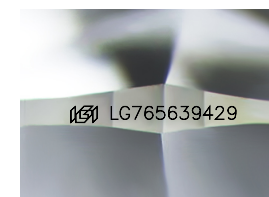
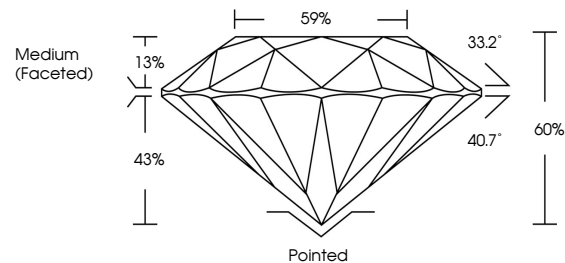
LG765639429
Report verification at igi.org



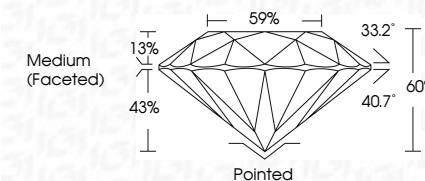
January 13, 2026
IGI Report Number **LG765639429**
Description **LABORATORY GROWN DIAMOND**
Shape and Cutting Style **ROUND BRILLIANT**
Measurements **8.61 - 8.64 X 5.18 MM**
GRADING RESULTS
Carat Weight **2.35 CARATS**
Color Grade **E**
Clarity Grade **VS 2**
Cut Grade **IDEAL**

January 13, 2026
IGI Report Number **LG765639429**
Description **LABORATORY GROWN DIAMOND**
Shape and Cutting Style **ROUND BRILLIANT**
Measurements **8.61 - 8.64 X 5.18 MM**
GRADING RESULTS
Carat Weight **2.35 CARATS**
Color Grade **E**
Clarity Grade **VS 2**
Cut Grade **IDEAL**

PROPORTIONS



Sample Image Used



ADDITIONAL GRADING INFORMATION

Polish **EXCELLENT**
Symmetry **EXCELLENT**
Fluorescence **NONE**
Inscription(s) **IGI LG765639429**

Comments: This Laboratory Grown Diamond was created by Chemical Vapor Deposition (CVD) growth process. Type IIa

ADDITIONAL GRADING INFORMATION

Polish **EXCELLENT**
Symmetry **EXCELLENT**
Fluorescence **NONE**
Inscription(s) **IGI LG765639429**
Comments: This Laboratory Grown Diamond was created by Chemical Vapor Deposition (CVD) growth process. Type IIa

COLOR

D E F G H I J Faint Very Light Light

CLARITY

FL	IF	VS ¹⁻²	VS ¹⁻²	SI ¹⁻²	I ¹⁻³
Flawless	Internally Flawless	Very Very Slightly Included	Very Slightly Included	Slightly Included	Included



IGI



January 13, 2026
IGI Report No **LG765639429**
ROUND BRILLIANT
8.61 - 8.64 X 5.18 MM
Carat Weight **2.35 CARATS**
Color Grade **E**
Clarity Grade **VS 2**
Cut Grade **IDEAL**
Depth **60%**
Table **69%**
Girdle **Medium (Faceted)**
Culet **Pointed**
Polish **EXCELLENT**
Symmetry **EXCELLENT**
Fluorescence **NONE**
Inscription(s) **IGI LG765639429**
Comments: This Laboratory Grown Diamond was created by Chemical Vapor Deposition (CVD) growth process. Type IIa