



ELECTRONIC COPY

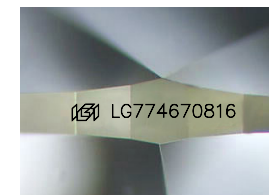
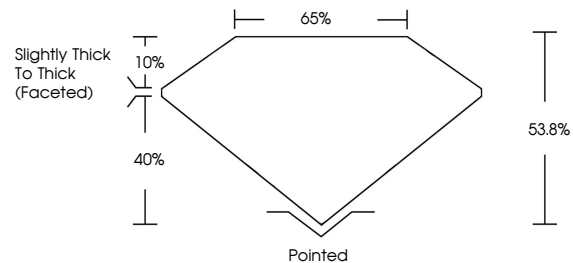
LG774670816
Report verification at igi.org



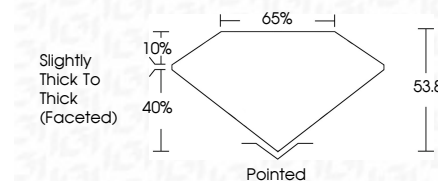
February 13, 2026
IGI Report Number **LG774670816**
Description **LABORATORY GROWN DIAMOND**
Shape and Cutting Style **HEART BRILLIANT**
Measurements **7.55 X 7.88 X 4.24 MM**
GRADING RESULTS
Carat Weight **1.48 CARAT**
Color Grade **D**
Clarity Grade **VVS 2**

February 13, 2026
IGI Report Number **LG774670816**
Description **LABORATORY GROWN DIAMOND**
Shape and Cutting Style **HEART BRILLIANT**
Measurements **7.55 X 7.88 X 4.24 MM**
GRADING RESULTS
Carat Weight **1.48 CARAT**
Color Grade **D**
Clarity Grade **VVS 2**

PROPORTIONS



Sample Image Used



ADDITIONAL GRADING INFORMATION
Polish **EXCELLENT**
Symmetry **EXCELLENT**
Fluorescence **NONE**
Inscription(s) **IGI LG774670816**

Comments: This Laboratory Grown Diamond was created by Chemical Vapor Deposition (CVD) growth process. Type IIa

COLOR

D E F G H I J Faint Very Light Light

CLARITY

FL	IF	VS ¹⁻²	VS ¹⁻²	SI ¹⁻²	I ¹⁻³
Flawless	Internally Flawless	Very Very Slightly Included	Very Slightly Included	Slightly Included	Included

ADDITIONAL GRADING INFORMATION

Polish **EXCELLENT**
Symmetry **EXCELLENT**
Fluorescence **NONE**
Inscription(s) **IGI LG774670816**
Comments: This Laboratory Grown Diamond was created by Chemical Vapor Deposition (CVD) growth process. Type IIa



February 13, 2026
IGI Report No **LG774670816**
HEART BRILLIANT
7.55 X 7.88 X 4.24 MM
1.48 CARAT
Color Grade **D**
Clarity Grade **VVS 2**
Depth **53.8%**
Table **10%**
Girdle **40%**
Slightly Thick To Thick (Faceted)
Culet **Pointed**
Polish **EXCELLENT**
Symmetry **EXCELLENT**
Fluorescence **NONE**
Inscription(s) **IGI LG774670816**
Comments: This Laboratory Grown Diamond was created by Chemical Vapor Deposition (CVD) growth process. Type IIa