



**ELECTRONIC COPY**

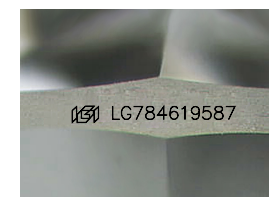
LG784619587  
Report verification at igi.org



March 24, 2026  
IGI Report Number **LG784619587**  
Description **LABORATORY GROWN DIAMOND**  
Shape and Cutting Style **LOZENGE STEP CUT**  
Measurements **11.55 X 7.89 X 4.66 MM**

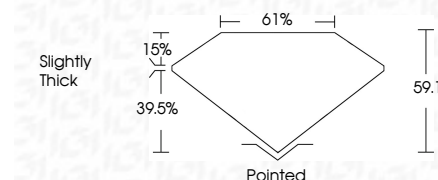
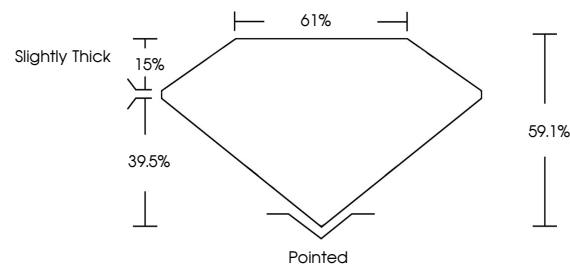
**GRADING RESULTS**

Carat Weight **2.06 CARATS**  
Color Grade **E**  
Clarity Grade **VVS 2**



Sample Image Used

**PROPORTIONS**



**ADDITIONAL GRADING INFORMATION**

Polish **EXCELLENT**  
Symmetry **EXCELLENT**  
Fluorescence **NONE**  
Inscription(s) **IGI LG784619587**  
Comments: This Laboratory Grown Diamond was created by Chemical Vapor Deposition (CVD) growth process. Type IIa



**COLOR**

D E F G H I J Faint Very Light Light

**CLARITY**

FL	IF	VVS <sup>1-2</sup>	VS <sup>1-2</sup>	SI <sup>1-2</sup>	I <sup>1-3</sup>
Flawless	Internally Flawless	Very Very Slightly Included	Very Slightly Included	Slightly Included	Included



March 24, 2026  
IGI Report No LG784619587  
**LOZENGE STEP CUT**

**2.06 CARATS**  
E  
2.06 CARATS

Carat Weight **2.06 CARATS**  
Color Grade **E**  
Clarity Grade **VVS 2**  
Depth **61%**  
Table **61%**  
Girdle **Slightly Thick**

Culet **Pointed**  
Polish **EXCELLENT**  
Symmetry **EXCELLENT**  
Fluorescence **NONE**  
Inscription(s) **IGI LG784619587**

Comments: This Laboratory Grown Diamond was created by Chemical Vapor Deposition (CVD) growth process. Type IIa