



ELECTRONIC COPY

LG784624123
Report verification at igi.org



March 21, 2026

IGI Report Number **LG784624123**

Description **LABORATORY GROWN DIAMOND**

Shape and Cutting Style **ROUND BRILLIANT**

Measurements **6.46 - 6.51 X 3.87 MM**

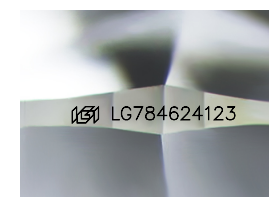
GRADING RESULTS

Carat Weight **1.00 CARAT**

Color Grade **F**

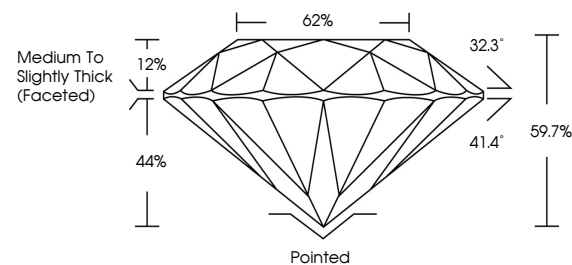
Clarity Grade **VVS 2**

Cut Grade **EXCELLENT**

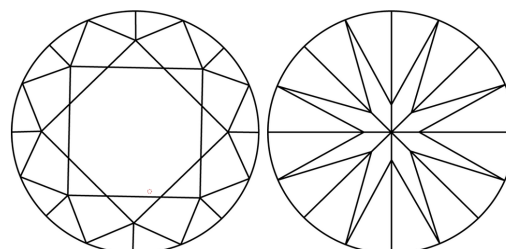


Sample Image Used

PROPORTIONS



CLARITY CHARACTERISTICS



KEY TO SYMBOLS

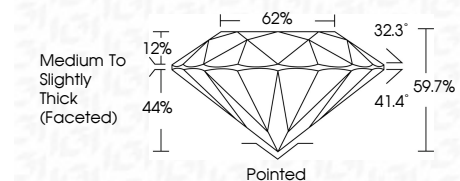
Red symbols indicate internal characteristics.
Green symbols indicate external characteristics.

COLOR

D E F G H I J Faint Very Light Light

CLARITY

FL	IF	VVS ¹⁻²	VS ¹⁻²	SI ¹⁻²	I ¹⁻³
Flawless	Internally Flawless	Very Very Slightly Included	Very Slightly Included	Slightly Included	Included



ADDITIONAL GRADING INFORMATION

Polish **EXCELLENT**

Symmetry **EXCELLENT**

Fluorescence **NONE**

Inscription(s) **IGI LG784624123**

Comments: This Laboratory Grown Diamond was created by Chemical Vapor Deposition (CVD) growth process. Type IIa



IGI



March 21, 2026	1.00 CARAT	F	VVS 2	EXCELLENT	62%	Medium To Slightly Thick (Faceted)	Pointed	EXCELLENT	EXCELLENT	NONE	IGI LG784624123
IGI Report No LG784624123	6.46 - 6.51 X 3.87 MM	LABORATORY GROWN DIAMOND	ROUND BRILLIANT	EXCELLENT	59.7%	Medium To Slightly Thick (Faceted)	Pointed	EXCELLENT	EXCELLENT	NONE	IGI LG784624123
Carat Weight	Color Grade	Description	Shape and Cutting Style	Clarity Grade	Depth	Table	Culet	Polish	Symmetry	Fluorescence	Inscription(s)
1.00 CARAT	F	LABORATORY GROWN DIAMOND	ROUND BRILLIANT	VVS 2	59.7%	62%	None	EXCELLENT	EXCELLENT	NONE	IGI LG784624123

Comments: This Laboratory Grown Diamond was created by Chemical Vapor Deposition (CVD) growth process. Type IIa