



ELECTRONIC COPY

LG790679430
Report verification at igi.org



April 13, 2026

IGI Report Number **LG790679430**

Description **LABORATORY GROWN DIAMOND**

Shape and Cutting Style **SQUARE EMERALD CUT**

Measurements **9.81 X 9.61 X 6.15 MM**

GRADING RESULTS

Carat Weight **5.25 CARATS**

Color Grade **F**

Clarity Grade **VVS 2**

April 13, 2026

IGI Report Number **LG790679430**

Description **LABORATORY GROWN DIAMOND**

Shape and Cutting Style **SQUARE EMERALD CUT**

Measurements **9.81 X 9.61 X 6.15 MM**

GRADING RESULTS

Carat Weight **5.25 CARATS**

Color Grade **F**

Clarity Grade **VVS 2**

ADDITIONAL GRADING INFORMATION

Polish **EXCELLENT**

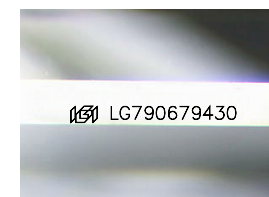
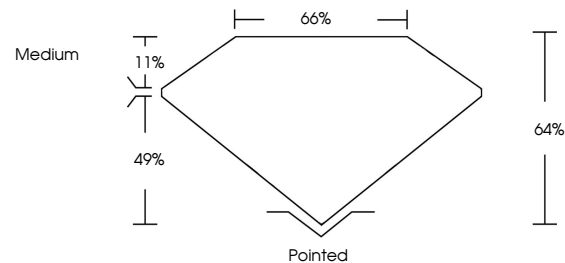
Symmetry **EXCELLENT**

Fluorescence **NONE**

Inscription(s) **IGI LG790679430**

Comments: This Laboratory Grown Diamond was created by Chemical Vapor Deposition (CVD) growth process.
Type IIa

PROPORTIONS



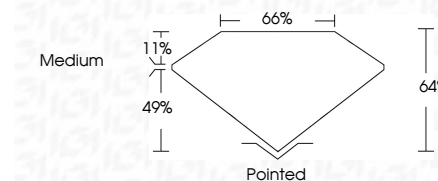
Sample Image Used

COLOR

D E F G H I J Faint Very Light Light

CLARITY

FL	IF	VS ¹⁻²	VS ¹⁻²	SI ¹⁻²	I ¹⁻³
Flawless	Internally Flawless	Very Very Slightly Included	Very Slightly Included	Slightly Included	Included



ADDITIONAL GRADING INFORMATION

Polish **EXCELLENT**

Symmetry **EXCELLENT**

Fluorescence **NONE**

Inscription(s) **IGI LG790679430**

Comments: This Laboratory Grown Diamond was created by Chemical Vapor Deposition (CVD) growth process.
Type IIa



April 13, 2026
IGI Report No LG790679430
SQUARE EMERALD CUT
9.81 X 9.61 X 6.15 MM
5.25 CARATS
F
VVS 2
64%
65%
Medium
Pointed
EXCELLENT
EXCELLENT
NONE
IGI LG790679430
Comments: This Laboratory Grown Diamond was created by Chemical Vapor Deposition (CVD) growth process.
Type IIa