



ELECTRONIC COPY

LG791629869 Report verification at igi.org



April 17, 2026 IGI Report Number LG791629869 Description LABORATORY GROWN DIAMOND Shape and Cutting Style ROUND BRILLIANT Measurements 6.58 - 6.63 X 4.04 MM GRADING RESULTS Carat Weight 1.09 CARAT Color Grade E Clarity Grade VS 2 Cut Grade EXCELLENT

April 17, 2026 IGI Report Number LG791629869 Description LABORATORY GROWN DIAMOND Shape and Cutting Style ROUND BRILLIANT Measurements 6.58 - 6.63 X 4.04 MM

GRADING RESULTS

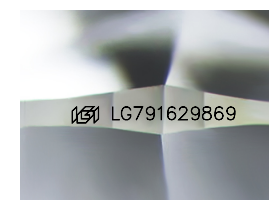
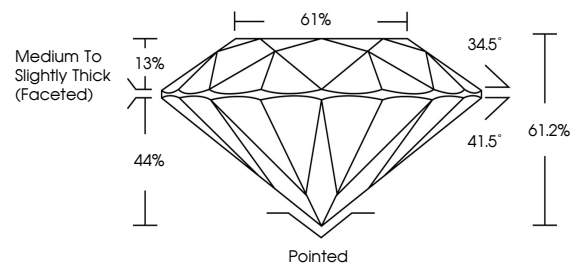
Carat Weight 1.09 CARAT Color Grade E Clarity Grade VS 2 Cut Grade EXCELLENT

ADDITIONAL GRADING INFORMATION

Polish EXCELLENT Symmetry EXCELLENT Fluorescence NONE Inscription(s) IGI LG791629869

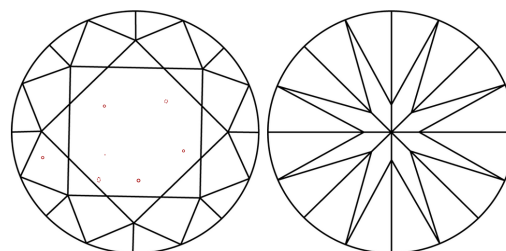
Comments: This Laboratory Grown Diamond was created by Chemical Vapor Deposition (CVD) growth process. Type IIa

PROPORTIONS



Sample Image Used

CLARITY CHARACTERISTICS



KEY TO SYMBOLS

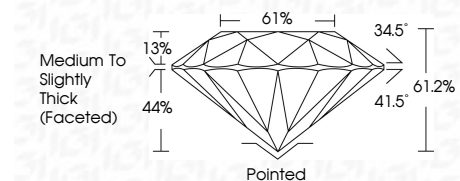
Red symbols indicate internal characteristics. Green symbols indicate external characteristics.

COLOR

D E F G H I J Faint Very Light Light

CLARITY

FL IF VS 1-2 VS 1-2 SI 1-2 I 1-3 Flawless Internally Flawless Very Very Slightly Included Very Slightly Included Slightly Included Included



ADDITIONAL GRADING INFORMATION

Polish EXCELLENT Symmetry EXCELLENT Fluorescence NONE Inscription(s) IGI LG791629869 Comments: This Laboratory Grown Diamond was created by Chemical Vapor Deposition (CVD) growth process. Type IIa



April 17, 2026 IGI Report No LG791629869 ROUND BRILLIANT 6.58 - 6.63 X 4.04 MM 1.09 CARAT E VS 2 EXCELLENT 61.2% 61% Medium To Slightly Thick (Faceted) Pointed EXCELLENT EXCELLENT NONE NONE IGI LG791629869 Comments: This Laboratory Grown Diamond was created by Chemical Vapor Deposition (CVD) growth process. Type IIa