



**ELECTRONIC COPY**

LG791660210  
Report verification at [igi.org](http://igi.org)



April 18, 2026  
IGI Report Number **LG791660210**  
Description **LABORATORY GROWN DIAMOND**  
Shape and Cutting Style **CUT CORNERED  
RECTANGULAR MODIFIED  
BRILLIANT**  
Measurements **8.76 X 6.35 X 4.22 MM**  
**GRADING RESULTS**  
Carat Weight **2.00 CARATS**  
Color Grade **E**  
Clarity Grade **VS 1**

April 18, 2026  
IGI Report Number **LG791660210**  
Description **LABORATORY GROWN DIAMOND**  
Shape and Cutting Style **CUT CORNERED RECTANGULAR  
MODIFIED BRILLIANT**  
Measurements **8.76 X 6.35 X 4.22 MM**

**GRADING RESULTS**

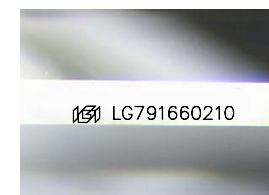
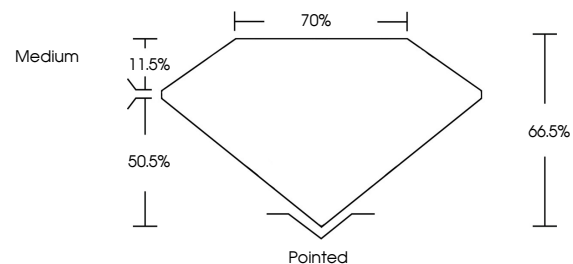
Carat Weight **2.00 CARATS**  
Color Grade **E**  
Clarity Grade **VS 1**

**ADDITIONAL GRADING INFORMATION**

Polish **EXCELLENT**  
Symmetry **EXCELLENT**  
Fluorescence **NONE**  
Inscription(s) **IGI LG791660210**

Comments: This Laboratory Grown Diamond was created by Chemical Vapor Deposition (CVD) growth process. Type IIa

**PROPORTIONS**



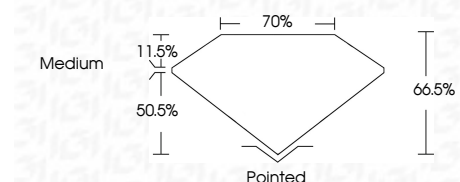
Sample Image Used

**COLOR**

D E F G H I J Faint Very Light Light

**CLARITY**

FL	IF	VS <sup>1-2</sup>	VS <sup>1-2</sup>	SI <sup>1-2</sup>	I <sup>1-3</sup>
Flawless	Internally Flawless	Very Very Slightly Included	Very Slightly Included	Slightly Included	Included



**ADDITIONAL GRADING INFORMATION**

Polish **EXCELLENT**  
Symmetry **EXCELLENT**  
Fluorescence **NONE**  
Inscription(s) **IGI LG791660210**  
Comments: This Laboratory Grown Diamond was created by Chemical Vapor Deposition (CVD) growth process. Type IIa



April 18, 2026  
IGI Report No **LG791660210**  
**CUT CORNERED RECT. MODIFIED BRILLIANT**  
**8.76 X 6.35 X 4.22 MM**  
Carat Weight **2.00 CARATS**  
Color Grade **E**  
Clarity Grade **VS 1**  
Depth **66.5%**  
Table **70%**  
Girdle **Medium**  
Culet **Pointed**  
Polish **EXCELLENT**  
Symmetry **EXCELLENT**  
Fluorescence **NONE**  
Inscription(s) **IGI LG791660210**  
Comments: This Laboratory Grown Diamond was created by Chemical Vapor Deposition (CVD) growth process. Type IIa