



**ELECTRONIC COPY**

LG791661506  
Report verification at igi.org



April 21, 2026

IGI Report Number **LG791661506**

Description **LABORATORY GROWN DIAMOND**

Shape and Cutting Style **ROUND BRILLIANT**

Measurements **7.28 - 7.32 X 4.50 MM**

**GRADING RESULTS**

Carat Weight **1.50 CARAT**

Color Grade **F**

Clarity Grade **VS 1**

Cut Grade **EXCELLENT**

April 21, 2026  
IGI Report Number **LG791661506**  
Description **LABORATORY GROWN DIAMOND**  
Shape and Cutting Style **ROUND BRILLIANT**  
Measurements **7.28 - 7.32 X 4.50 MM**

**GRADING RESULTS**

Carat Weight **1.50 CARAT**

Color Grade **F**

Clarity Grade **VS 1**

Cut Grade **EXCELLENT**

**ADDITIONAL GRADING INFORMATION**

Polish **EXCELLENT**

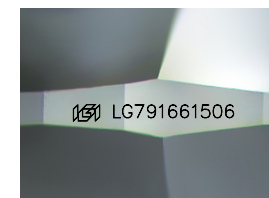
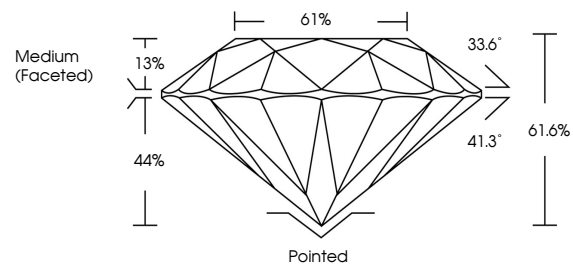
Symmetry **EXCELLENT**

Fluorescence **NONE**

Inscription(s) **IGI LG791661506**

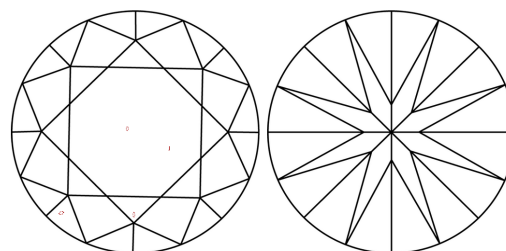
Comments: This Laboratory Grown Diamond was created by Chemical Vapor Deposition (CVD) growth process.  
Type IIa

**PROPORTIONS**



Sample Image Used

**CLARITY CHARACTERISTICS**



**KEY TO SYMBOLS**

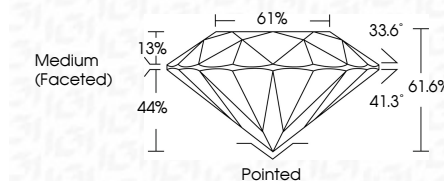
Red symbols indicate internal characteristics.  
Green symbols indicate external characteristics.

**COLOR**

D E F G H I J Faint Very Light Light

**CLARITY**

FL	IF	VS <sup>1-2</sup>	VS <sup>1-2</sup>	SI <sup>1-2</sup>	I <sup>1-3</sup>
Flawless	Internally Flawless	Very Very Slightly Included	Very Slightly Included	Slightly Included	Included



**ADDITIONAL GRADING INFORMATION**

Polish **EXCELLENT**

Symmetry **EXCELLENT**

Fluorescence **NONE**

Inscription(s) **IGI LG791661506**

Comments: This Laboratory Grown Diamond was created by Chemical Vapor Deposition (CVD) growth process.  
Type IIa



April 21, 2026	IGI Report No LG791661506	ROUND BRILLIANT	7.28 - 7.32 X 4.50 MM	1.50 CARAT	F	VS 1	EXCELLENT	61.6%	61%	Medium (Faceted)	Pointed	EXCELLENT	EXCELLENT	NONE	IGI LG791661506

Comments: This Laboratory Grown Diamond was created by Chemical Vapor Deposition (CVD) growth process.  
Type IIa