



**ELECTRONIC COPY**

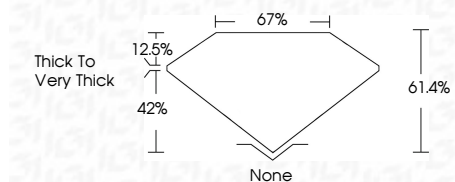
LG794641061  
Report verification at igi.org



April 22, 2026  
IGI Report Number **LG794641061**  
Description **LABORATORY GROWN DIAMOND**  
Shape and Cutting Style **MODIFIED OVAL STEP CUT**  
Measurements **11.54 X 7.66 X 4.70 MM**

**GRADING RESULTS**

Carat Weight **3.08 CARATS**  
Color Grade **E**  
Clarity Grade **VVS 2**



**ADDITIONAL GRADING INFORMATION**

Polish **EXCELLENT**  
Symmetry **EXCELLENT**  
Fluorescence **NONE**  
Inscription(s) **IGI LG794641061**  
Comments: This Laboratory Grown Diamond was created by Chemical Vapor Deposition (CVD) growth process. Type IIa



April 22, 2026  
IGI Report No LG794641061  
MODIFIED OVAL STEP CUT  
11.54 X 7.66 X 4.70 MM  
3.08 CARATS  
E  
VVS 2  
61.4%  
67%  
Thick to Very Thick  
None  
EXCELLENT  
EXCELLENT  
NONE  
IGI LG794641061  
Comments: This Laboratory Grown Diamond was created by Chemical Vapor Deposition (CVD) growth process. Type IIa

**LABORATORY GROWN DIAMOND REPORT**

April 22, 2026  
IGI Report Number **LG794641061**  
Description **LABORATORY GROWN DIAMOND**  
Shape and Cutting Style **MODIFIED OVAL STEP CUT**  
Measurements **11.54 X 7.66 X 4.70 MM**

**GRADING RESULTS**

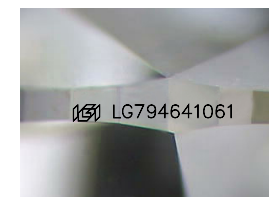
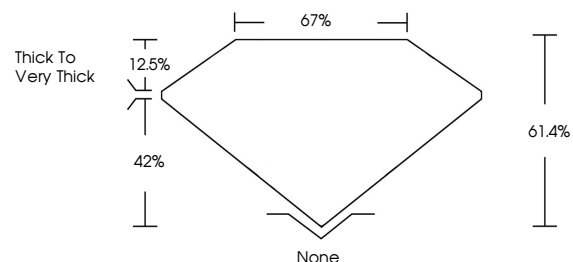
Carat Weight **3.08 CARATS**  
Color Grade **E**  
Clarity Grade **VVS 2**

**ADDITIONAL GRADING INFORMATION**

Polish **EXCELLENT**  
Symmetry **EXCELLENT**  
Fluorescence **NONE**  
Inscription(s) **IGI LG794641061**

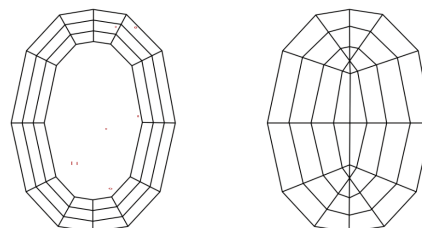
Comments: This Laboratory Grown Diamond was created by Chemical Vapor Deposition (CVD) growth process. Type IIa

**PROPORTIONS**



Sample Image Used

**CLARITY CHARACTERISTICS**



**KEY TO SYMBOLS**

Red symbols indicate internal characteristics.  
Green symbols indicate external characteristics.

**COLOR**

D E F G H I J Faint Very Light Light

**CLARITY**

FL	IF	VVS <sup>1-2</sup>	VS <sup>1-2</sup>	SI <sup>1-2</sup>	I <sup>1-3</sup>
Flawless	Internally Flawless	Very Very Slightly Included	Very Slightly Included	Slightly Included	Included

