



ELECTRONIC COPY

LABORATORY GROWN DIAMOND REPORT

May 6, 2026  
IGI Report Number LG799623172  
Description LABORATORY GROWN DIAMOND  
Shape and Cutting Style CUSHION MODIFIED BRILLIANT  
Measurements 9.25 X 6.51 X 4.42 MM

GRADING RESULTS

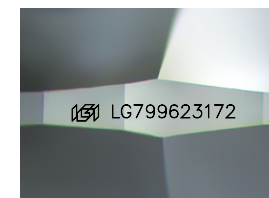
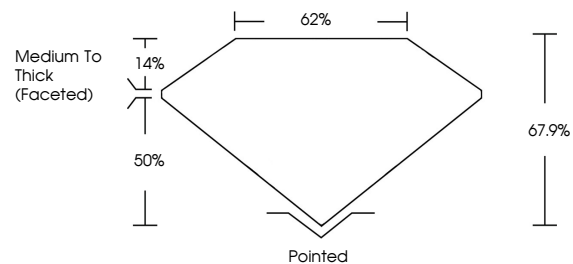
Carat Weight 2.13 CARATS  
Color Grade E  
Clarity Grade VS 1

ADDITIONAL GRADING INFORMATION

Polish EXCELLENT  
Symmetry EXCELLENT  
Fluorescence NONE  
Inscription(s) IGI LG799623172

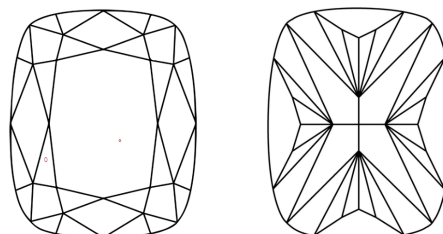
Comments: This Laboratory Grown Diamond was created by Chemical Vapor Deposition (CVD) growth process. Type IIa

PROPORTIONS



Sample Image Used

CLARITY CHARACTERISTICS



KEY TO SYMBOLS

Red symbols indicate internal characteristics.  
Green symbols indicate external characteristics.

COLOR

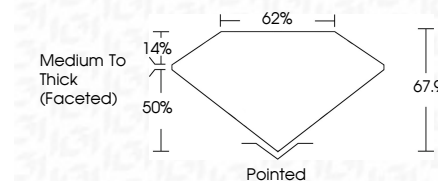
D E F G H I J Faint Very Light Light

CLARITY

FL IF VS 1-2 VS 2-3 SI 1-2 I 1-3  
Flawless Internally Flawless Very Very Slightly Included Very Slightly Included Slightly Included Included



May 6, 2026  
IGI Report Number LG799623172  
Description LABORATORY GROWN DIAMOND  
Shape and Cutting Style CUSHION MODIFIED BRILLIANT  
Measurements 9.25 X 6.51 X 4.42 MM  
GRADING RESULTS  
Carat Weight 2.13 CARATS  
Color Grade E  
Clarity Grade VS 1



ADDITIONAL GRADING INFORMATION

Polish EXCELLENT  
Symmetry EXCELLENT  
Fluorescence NONE  
Inscription(s) IGI LG799623172  
Comments: This Laboratory Grown Diamond was created by Chemical Vapor Deposition (CVD) growth process. Type IIa



May 6, 2026  
IGI Report No LG799623172  
CUSHION MODIFIED BRILLIANT  
9.25 X 6.51 X 4.42 MM  
2.13 CARATS  
E  
2.13 CARATS  
E  
VS 1  
67.9%  
62%  
Medium To Thick (Faceted)  
Pointed  
EXCELLENT  
EXCELLENT  
NONE  
IGI LG799623172  
Comments: This Laboratory Grown Diamond was created by Chemical Vapor Deposition (CVD) growth process. Type IIa