



ELECTRONIC COPY

LG800633130 Report verification at igi.org



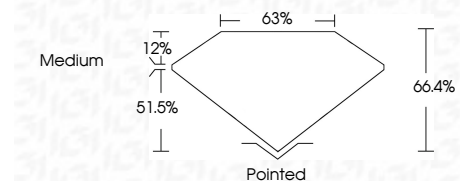
June 1, 2026 IGI Report Number LG800633130 Description LABORATORY GROWN DIAMOND

Shape and Cutting Style CUT CORNERED RECTANGULAR MODIFIED BRILLIANT

Measurements 10.14 X 7.36 X 4.89 MM

GRADING RESULTS

Carat Weight 3.04 CARATS Color Grade E Clarity Grade VVS 2



ADDITIONAL GRADING INFORMATION

Polish EXCELLENT Symmetry EXCELLENT Fluorescence NONE Inscription(s) LG800633130

Comments: This Laboratory Grown Diamond was created by Chemical Vapor Deposition (CVD) growth process. Type IIa



June 1, 2026 IGI Report No LG800633130 CUT CORNERED RECT. MODIFIED BRILLIANT 10.14 X 7.36 X 4.89 MM 3.04 CARATS E VVS 2 66.4% 63% Medium Pointed EXCELLENT EXCELLENT NONE LG800633130

Comments: This Laboratory Grown Diamond was created by Chemical Vapor Deposition (CVD) growth process. Type IIa

LABORATORY GROWN DIAMOND REPORT

June 1, 2026 IGI Report Number LG800633130 Description LABORATORY GROWN DIAMOND Shape and Cutting Style CUT CORNERED RECTANGULAR MODIFIED BRILLIANT Measurements 10.14 X 7.36 X 4.89 MM

GRADING RESULTS

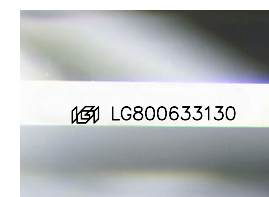
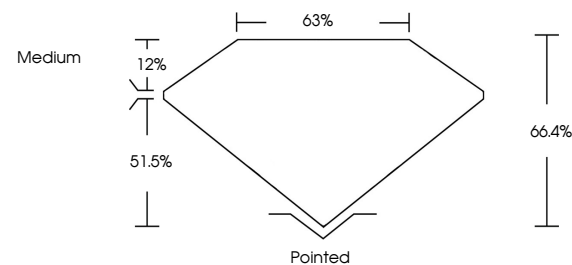
Carat Weight 3.04 CARATS Color Grade E Clarity Grade VVS 2

ADDITIONAL GRADING INFORMATION

Polish EXCELLENT Symmetry EXCELLENT Fluorescence NONE Inscription(s) LG800633130

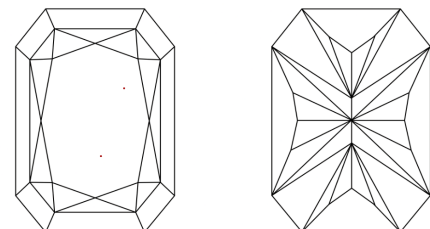
Comments: This Laboratory Grown Diamond was created by Chemical Vapor Deposition (CVD) growth process. Type IIa

PROPORTIONS



Sample Image Used

CLARITY CHARACTERISTICS



KEY TO SYMBOLS

Red symbols indicate internal characteristics. Green symbols indicate external characteristics.

COLOR

D E F G H I J Faint Very Light Light

CLARITY

FL IF VVS 1-2 VS 1-2 SI 1-2 I 1-3 Flawless Internally Flawless Very Very Slightly Included Very Slightly Included Slightly Included Included

