



ELECTRONIC COPY

LG805608759
Report verification at igi.org



May 26, 2026

IGI Report Number **LG805608759**

Description **LABORATORY GROWN DIAMOND**

Shape and Cutting Style **OVAL BRILLIANT**

Measurements **11.07 X 7.86 X 4.75 MM**

GRADING RESULTS

Carat Weight **2.60 CARATS**

Color Grade **F**

Clarity Grade **VVS 2**

LABORATORY GROWN DIAMOND REPORT

May 26, 2026

IGI Report Number **LG805608759**

Description **LABORATORY GROWN DIAMOND**

Shape and Cutting Style **OVAL BRILLIANT**

Measurements **11.07 X 7.86 X 4.75 MM**

GRADING RESULTS

Carat Weight **2.60 CARATS**

Color Grade **F**

Clarity Grade **VVS 2**

ADDITIONAL GRADING INFORMATION

Polish **EXCELLENT**

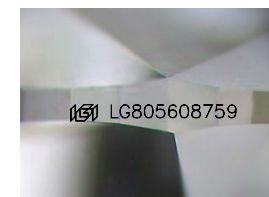
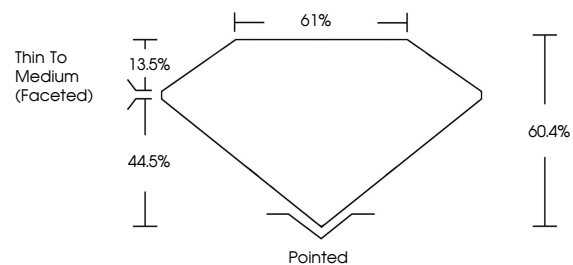
Symmetry **EXCELLENT**

Fluorescence **NONE**

Inscription(s) **IGI LG805608759**

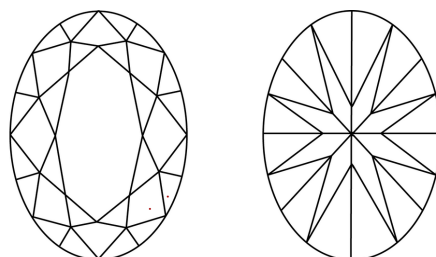
Comments: This Laboratory Grown Diamond was created by Chemical Vapor Deposition (CVD) growth process. Type IIa

PROPORTIONS



Sample Image Used

CLARITY CHARACTERISTICS



KEY TO SYMBOLS

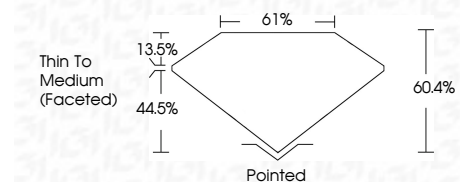
Red symbols indicate internal characteristics.
Green symbols indicate external characteristics.

COLOR

D E F G H I J Faint Very Light Light

CLARITY

FL	IF	VVS ¹⁻²	VS ¹⁻²	SI ¹⁻²	I ¹⁻³
Flawless	Internally Flawless	Very Very Slightly Included	Very Slightly Included	Slightly Included	Included



ADDITIONAL GRADING INFORMATION

Polish **EXCELLENT**

Symmetry **EXCELLENT**

Fluorescence **NONE**

Inscription(s) **IGI LG805608759**

Comments: This Laboratory Grown Diamond was created by Chemical Vapor Deposition (CVD) growth process. Type IIa



IGI



May 26, 2026	IGI Report No LG805608759	2.60 CARATS	F
OVAL BRILLIANT	11.07 X 7.86 X 4.75 MM	VVS 2	60.4%
Carat Weight	Color Grade	Thin To Medium (Faceted)	61%
Clarity Grade	Depth	Pointed	EXCELLENT
Table	Girdle	Symmetry	EXCELLENT
Culet	Polish	Fluorescence	NONE
Inscription(s)			IGI LG805608759

Comments: This Laboratory Grown Diamond was created by Chemical Vapor Deposition (CVD) growth process. Type IIa